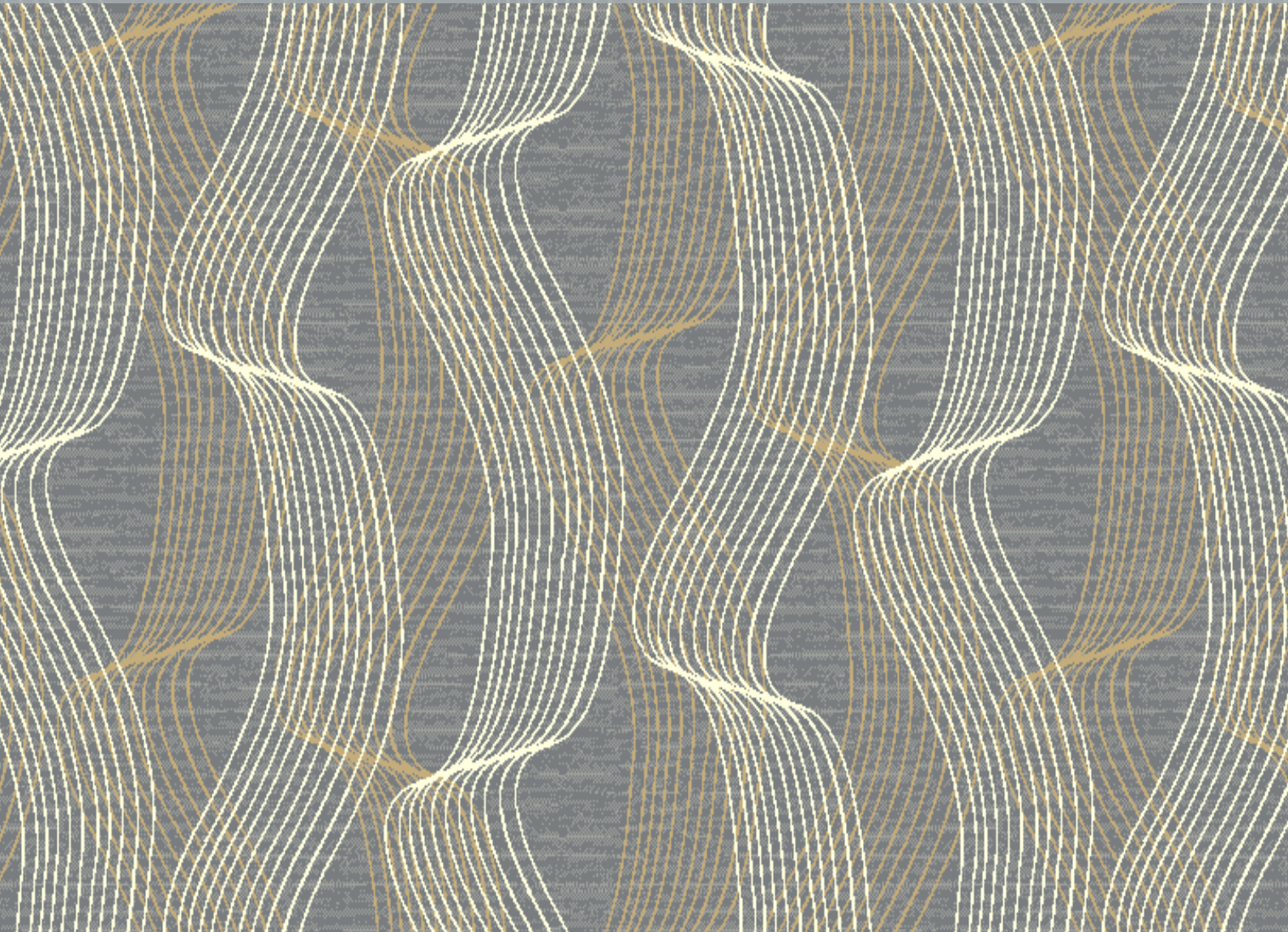




BY APPOINTMENT
TO HER MAJESTY THE QUEEN
CARPET MANUFACTURERS
BRINTONS CARPETS LIMITED WIDDERMINSTER

Brintons



 QuickWeave™

Introducing the new
Unity Palette

Quickweave™ by Brintons is an innovative approach to carpet design.

Quickweave™ is ideal for smaller projects, offering fast delivery for custom woven carpet. Select a design from our specially curated collection of production ready axminster designs, recolour using one of our Quickweave™ palettes and we'll weave to order.

This latest design collection introduces 12 new patterns, which showcase how the innovative Unity palette can be used.

A brand new introduction to our Brintons Quickweave™ offer, heather, velvet and textured twist yarns are brought together to create a fresh and unique palette.

Heathers are specially blended from different coloured yarns, which gives them a multicoloured, flecked appearance. This effect adds subtle interest to the areas of the design in which they are used.

Our twist yarn, Vanilla TX42, is an ideal highlight, best used in smaller areas that you want to stand out. The heavy twist adds another texture and dimension to your chosen pattern.



*Twist yarn (Max 30% use) † Heather Yarn

Brintons Design team is on hand to guide your yarn choice to ensure the placement of yarn types brings out the very best in your selected design, adding highlights and texture to the correct area of the pattern.

Unity is also available across the entire Quickweave™ design collection, bringing you hundreds of new design and colour combinations so you are able to find the perfect choice for your project, visit dso.brintons.net.

For further help and advice on how to use the Unity palette to recolour Quickweave™ designs please contact your Brintons representative who can help guide you and provide woven samples demonstrating the different yarn types.

- 17-0040
- 20-4049
- BV400
- 20-4054
- BV52
- BV186
- TX42

I/Q1913

Pattern repeat 2.00m x 2.03m



- BV132
- BV186
- BV52
- TX42

I/Q1917

Pattern repeat 1.00m x 0.71m



I/Q1913

5

4

- BV186
- BV52
- 17-0040
- TX42
- 20-4054
- BV132
- 20-4049

I/Q1910

Pattern repeat 1.33m x 0.58m



- BV8
- BV132
- TX42

I/Q1923

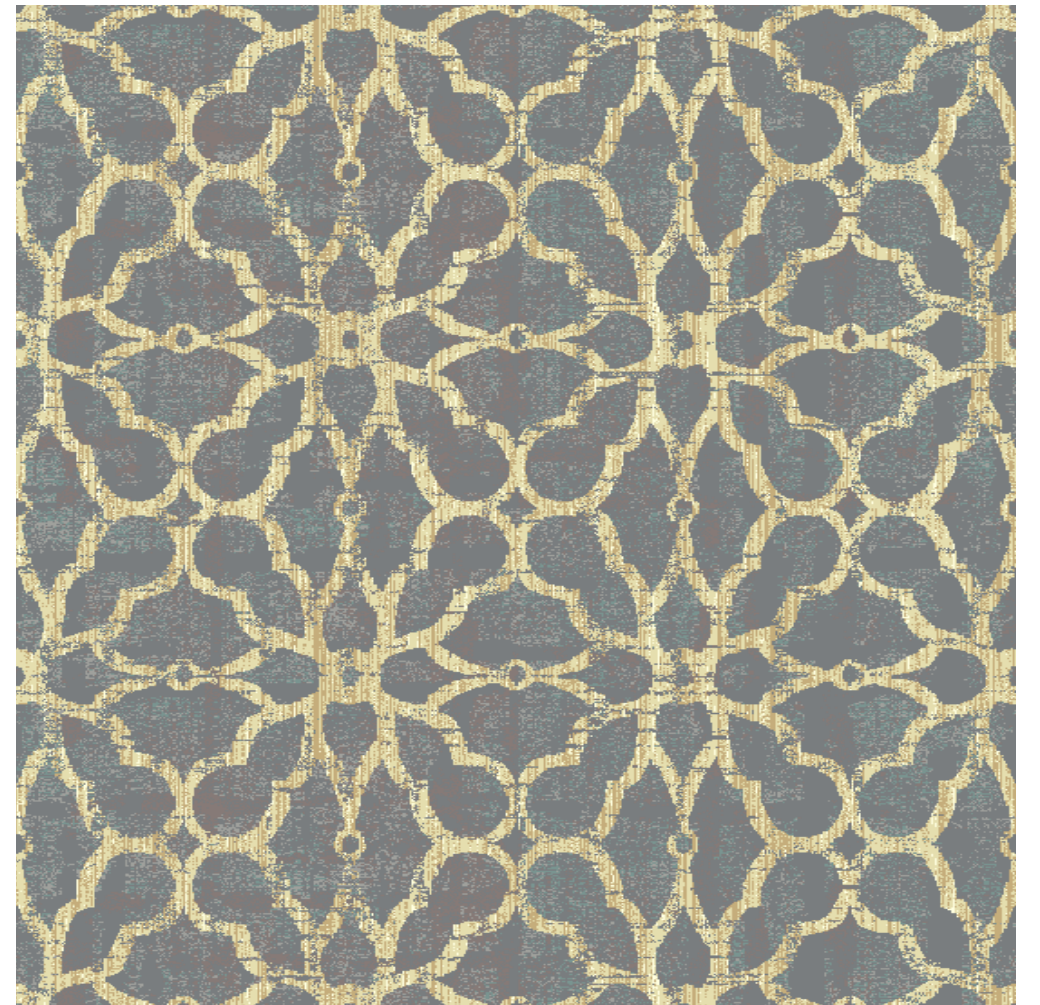
Pattern repeat 2.00m x 1.49m



- 17-0040
- 20-4049
- BV400
- 20-4054
- BV52
- BV186
- TX42

I/Q1911

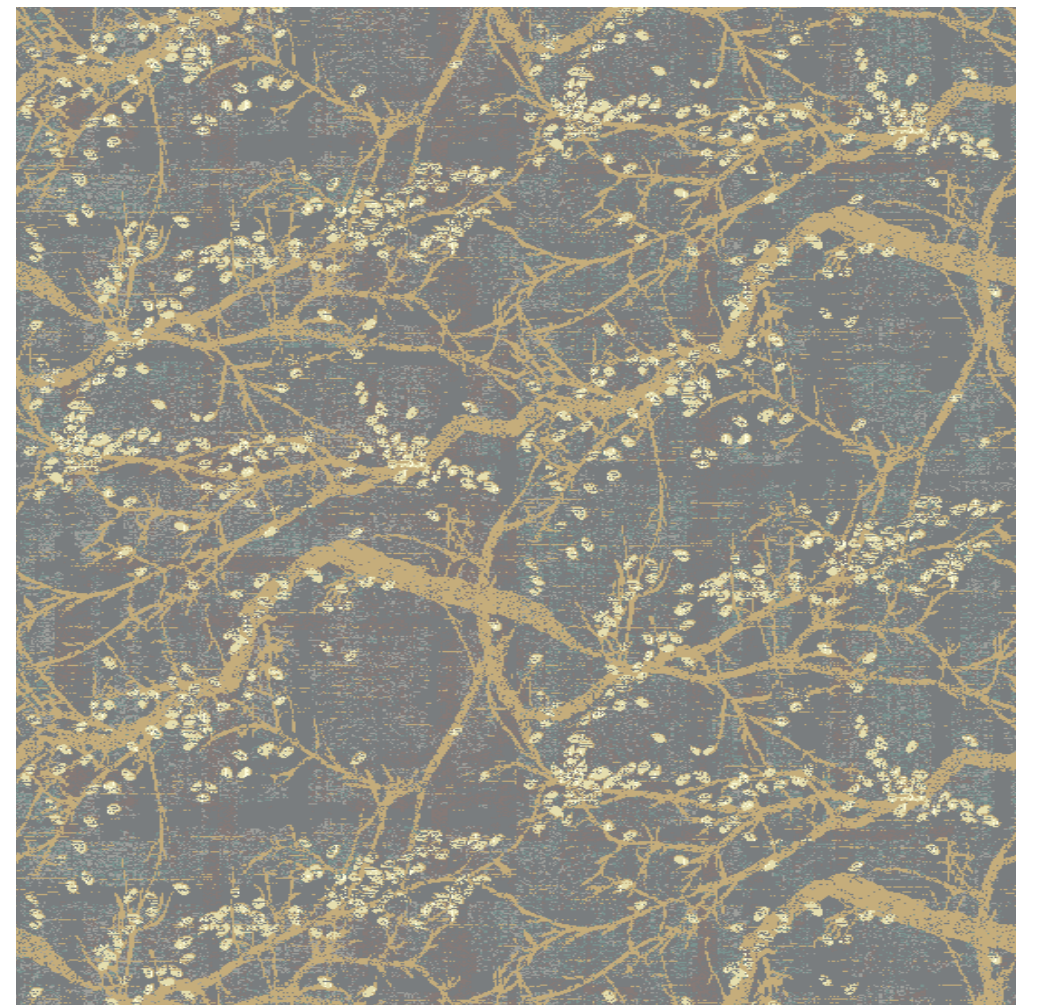
Pattern repeat 2.00m x 1.30m



- 17-0040
- 20-4049
- BV400
- 20-4054
- BV186
- BV52
- TX42

I/Q1912

Pattern repeat 2.00m x 1.34m

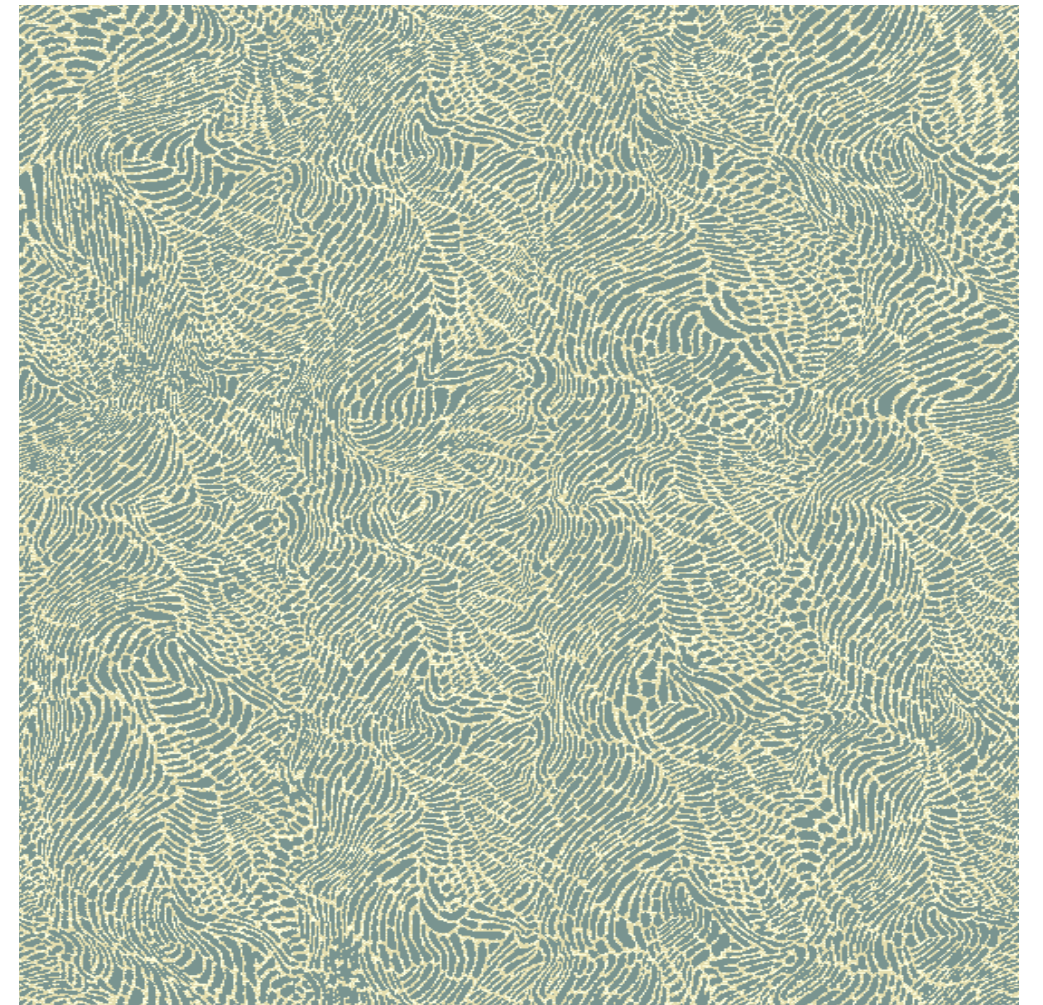




- BV400
- BV52
- TX42

I/Q1915

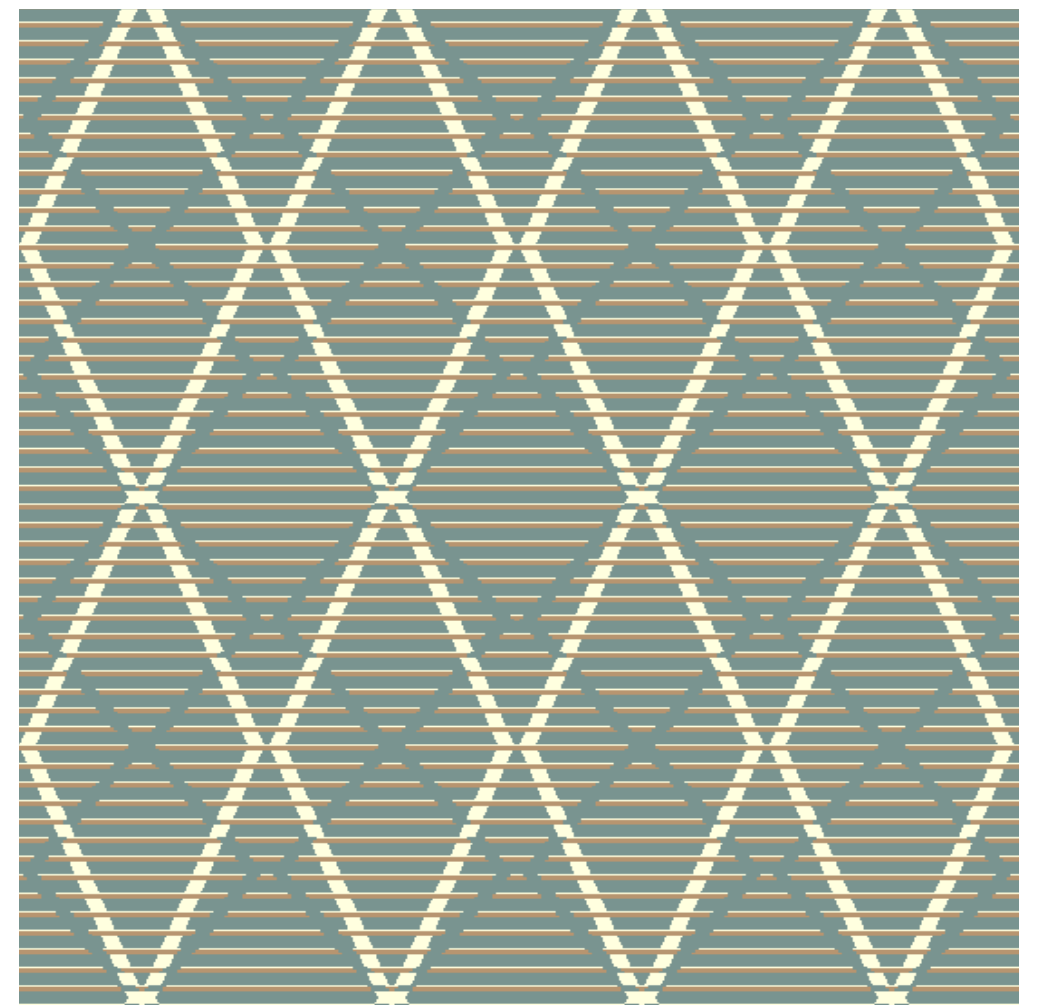
Pattern repeat 2.00m x 2.00m



- BV400
- BV132
- TX42

I/Q1909

Pattern repeat 0.50m x 0.91m

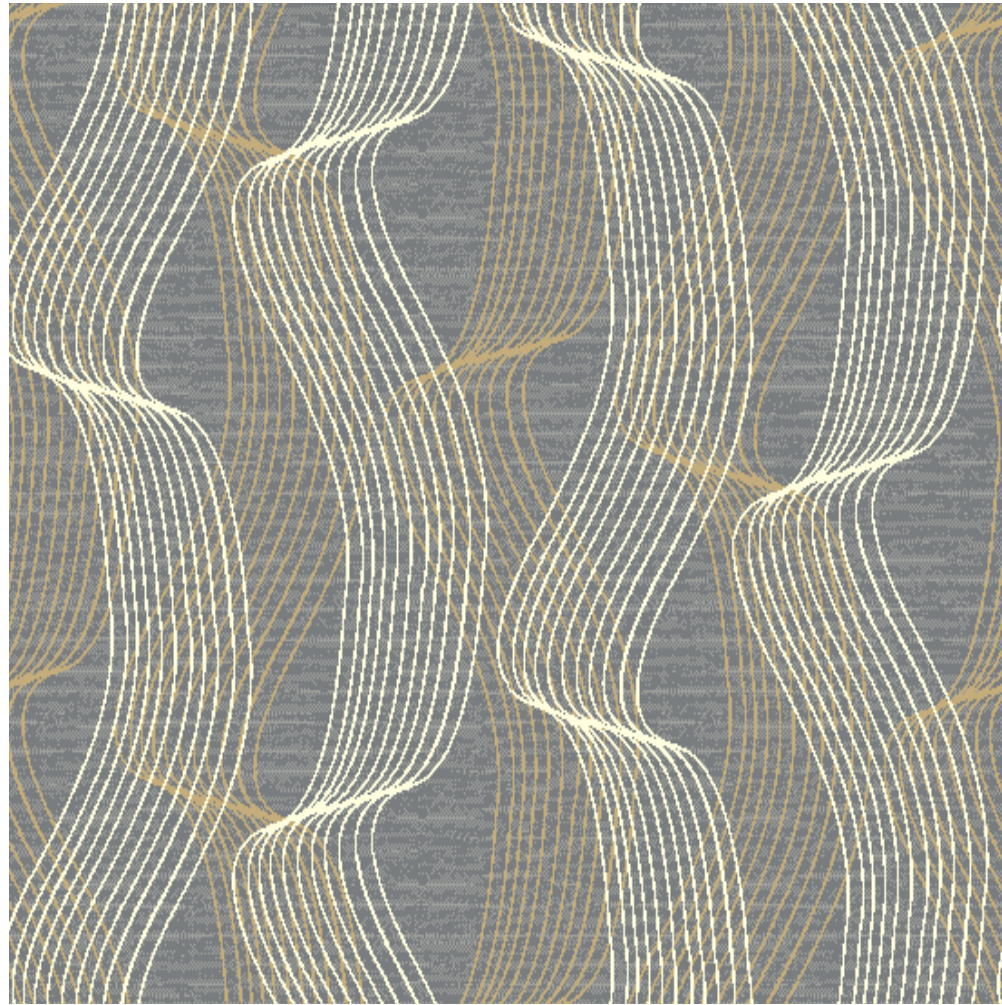


I/Q1909

- 20-4054
- 17-0040
- BV186
- TX42

I/Q|9|6

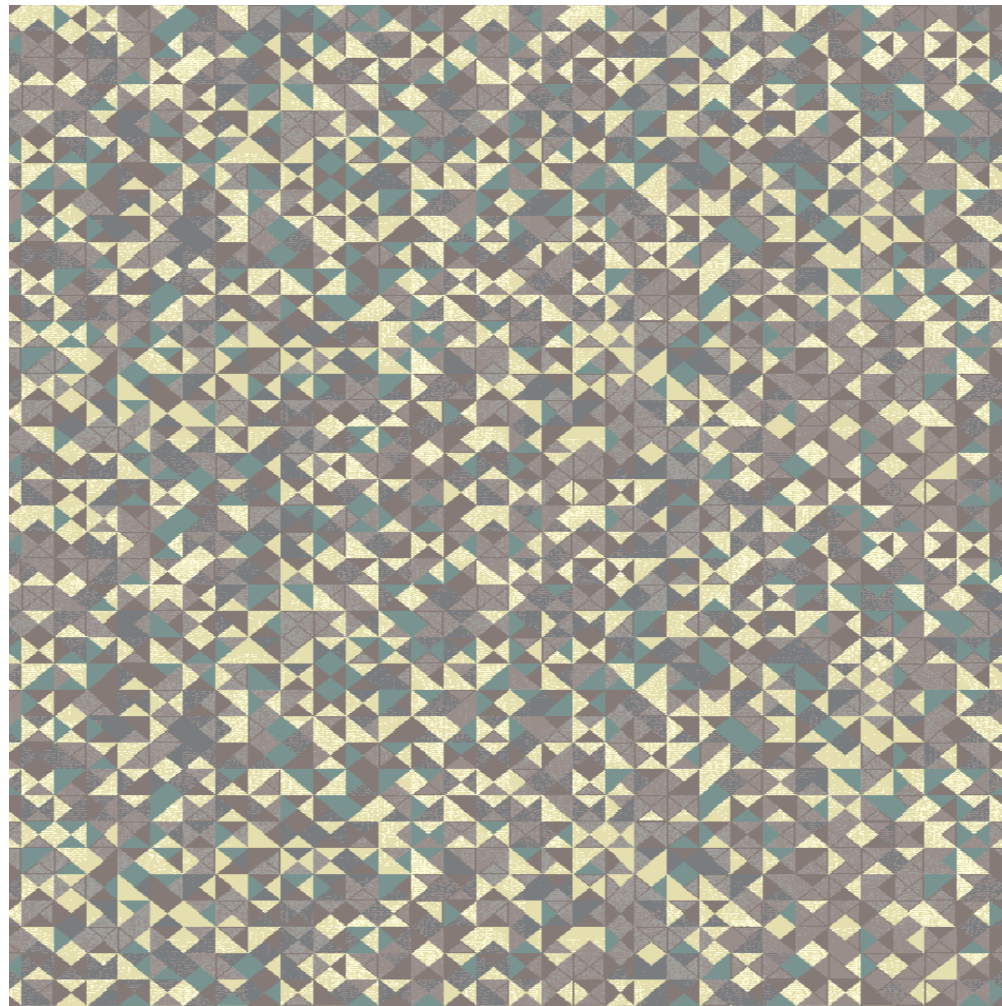
Pattern repeat 2.00m x 1.08m



- 20-4049
- 20-4054
- 20-3150
- 17-0040
- BV52
- TX42
- BV400

I/Q|9|8

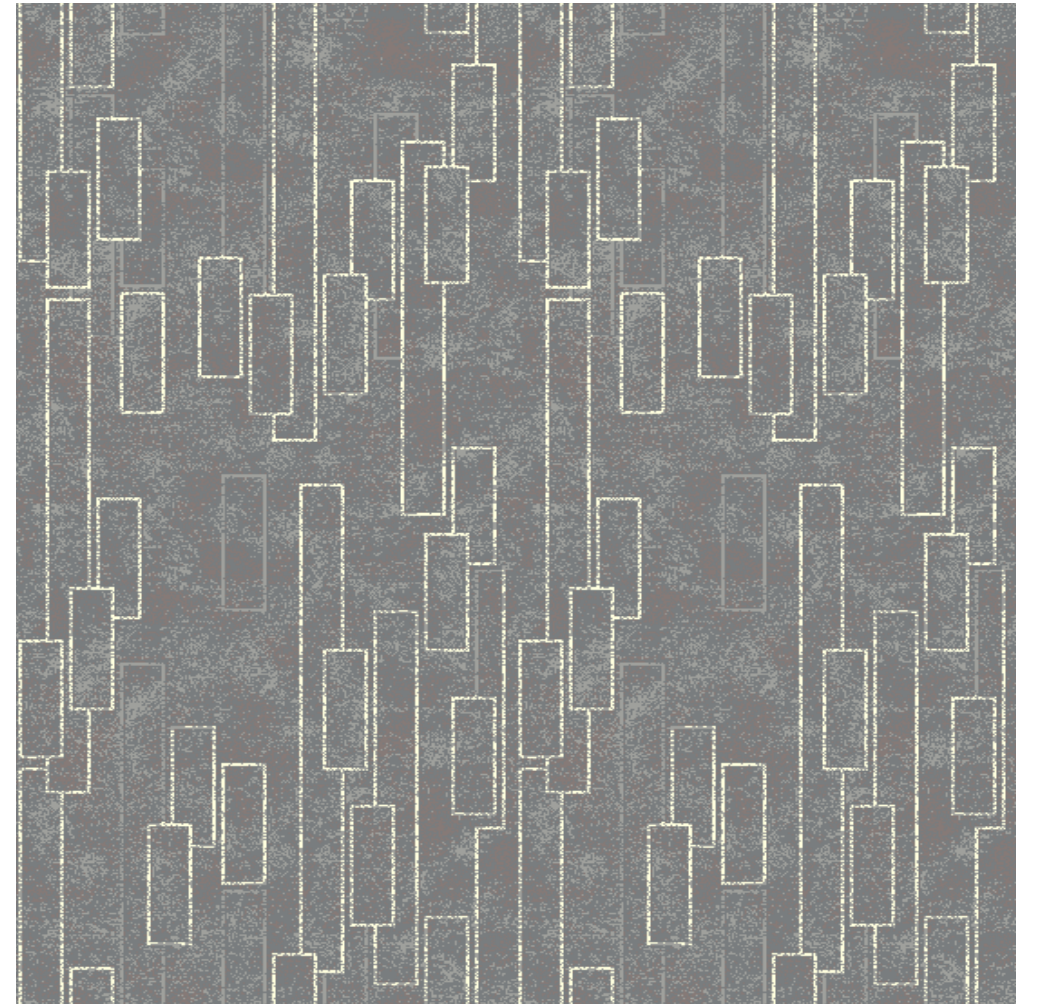
Pattern repeat 2.00m x 1.20m



- 17-0040
- 20-4054
- 20-4049
- TX42

I/Q|9|24

Pattern repeat 1.00m x 1.82m



- BV8
- BV186
- BV132
- 20-4049
- 20-4054
- 20-3150
- 17-0040

I/Q|9|4

Pattern repeat 4.00m x 2.00m



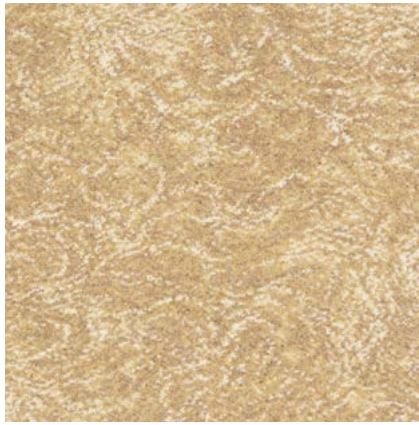
Area shown: 2m x 2m

www.brintons.net

© Copyright Brintons Carpets Limited 2021



I/Q1910



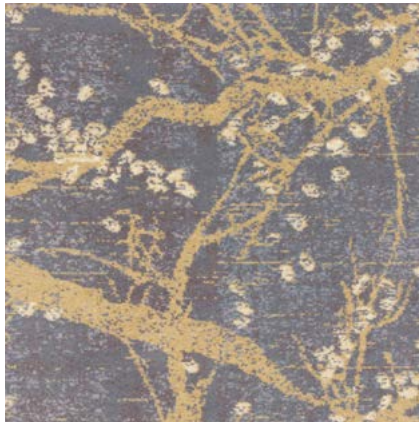
I/Q1917



I/Q1923



I/Q1913



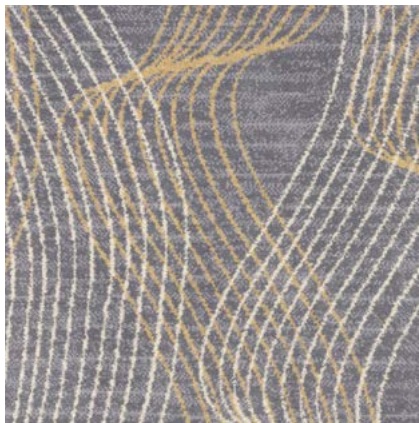
I/Q1912



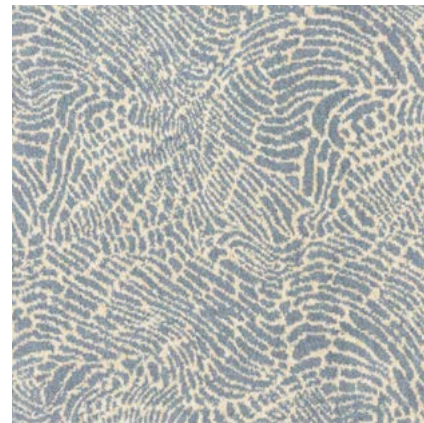
I/Q1914



I/Q1911



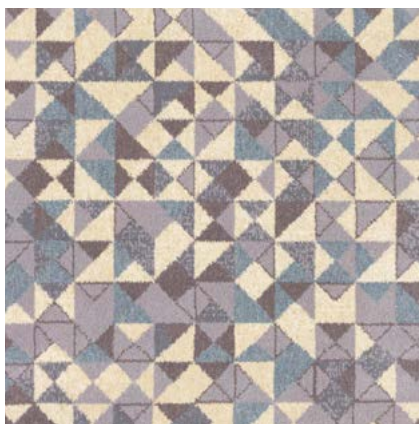
I/Q1916



I/Q1915



I/Q1924



I/Q1918



I/Q1909



I/Q1916

Quickweave™ by Brintons is an innovative approach to carpet design, ideal for customers who require a custom made carpet with a short turnaround time.

Select a Quickweave™ design from the hundreds available and recolour using one of our Quickweave™ palettes; Unity, Naturals, Inception, Odyssey or Sequence. Choose the quality most suited to your application and once you are happy with your design, Brintons will weave your custom carpet to order and deliver within 6 weeks.

Perfectly suited to projects up to 1000m², our award winning design team has developed a series of production ready Axminster carpets to reflect today's trends.

Creating your QuickWeave™ Unity carpet

- 1. Choose your preferred design from our Quickweave™ collection - visit **dso.brintons.net** to explore the range.
- 2. Pick your colour combination from within the Unity palette.
- 3. Our design team is on hand to help with placement of yarn types.
- 4. Choose the quality best suited to your application.
- 5. Order your free Quickweave™ sample.
- 6. Once approved Brintons will weave your custom carpet to order and deliver within 6 weeks.



For inspiration go to Brintons Design Studio Online (DSO) which provides access to thousands of digital designs. This online tool enables you to search by design category and installation type to identify a carpet design to fit your brief. Once a design has been selected the interactive software can be used to re-colour to suit a specific interior design scheme. The programme will then produce an image of the carpet in a computer-generated 3D interior. Register online and we will be in touch.

dso.brintons.net

Technical Specifications

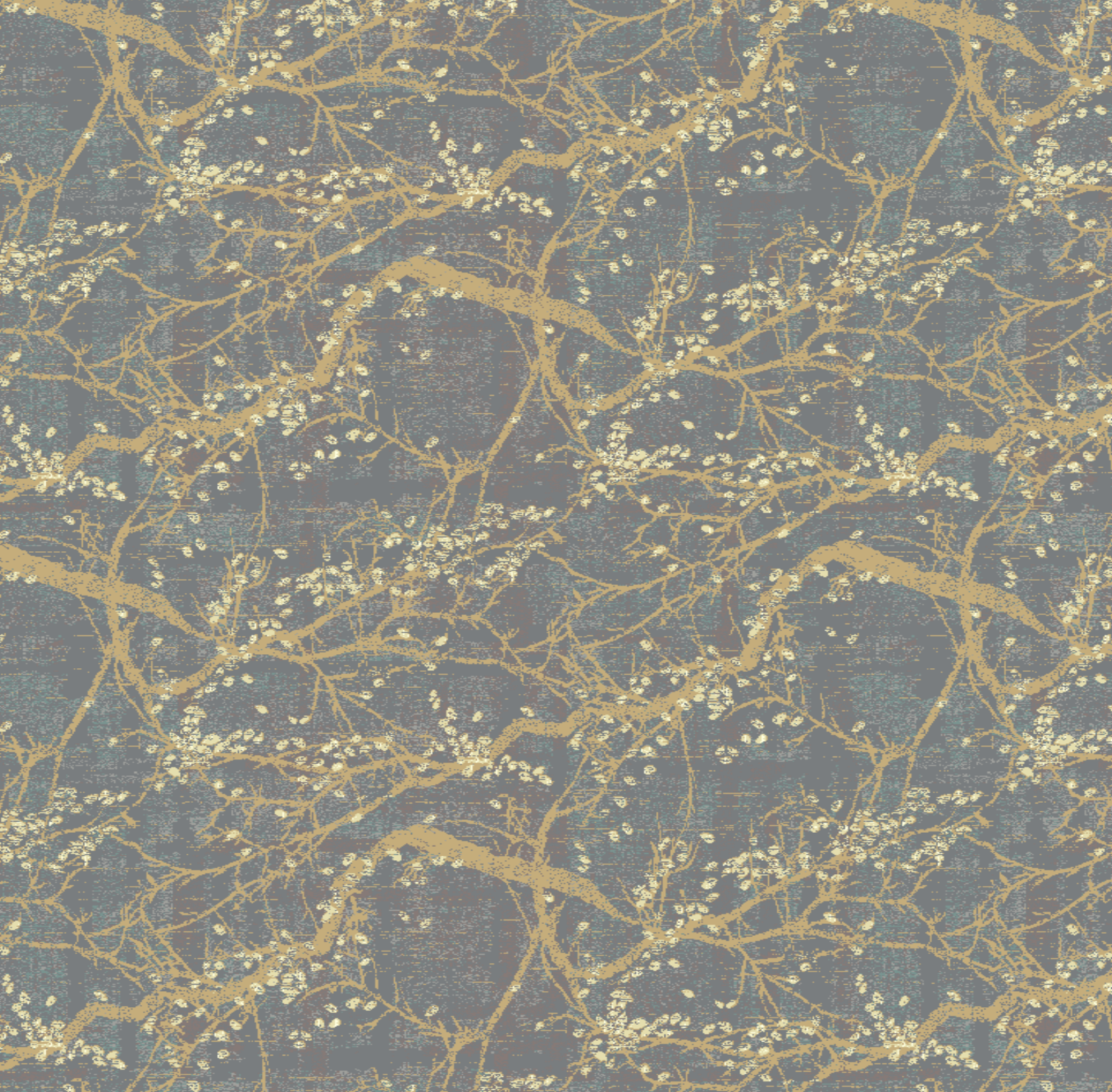
	QW728A	QW828A	QW928A	QW1028A	QW1128A
Construction	Woven Axminster	Woven Axminster	Woven Axminster	Woven Axminster	Woven Axminster
Surface Structure	Cut pile, single level	Cut pile, single level	Cut pile, single level	Cut pile, single level	Cut pile, single level
Yarn Composition	80% wool 20% nylon	80% wool 20% nylon	80% wool 20% nylon	80% wool 20% nylon	80% wool 2 0% nylon
Pitch	7 per inch	7 per inch	7 per inch	7 per inch	7 per inch
Rows	7 per inch	8 per inch	9 per inch	10 per inch	11 per inch
Tuft Density	49 per sq inch	56 per sq inch	63 per sq inch	70 per sq inch	77 per sq inch
Pile Height	6.6 mm	7 mm	7.3 mm	7.4 mm	7.5 mm
Total Height	9.3 mm	9.7 mm	10 mm	10.1 mm	10.2 mm
Pile Weight	1023 g/m²	1169 g/m²	1315 g/m²	1462 g/m²	1608 g/m²
Total Weight	1672 g/m²	1873 g/m²	2075 g/m²	2081 g/m²	2264 g/m²
Backing Material	Polyester/ Polypropylene/ Latex	Polyester/ Polypropylene/ Latex	Polyester/ Polypropylene/ Latex	Polyester/ Polypropylene/ Latex	Polyester/ Polypropylene/ Latex
Suitability	Heavy Domestic Medium Contract	Heavy Domestic Heavy Contract	Extra Heavy Domestic Heavy Contract	Extra Heavy Domestic Extra Heavy Contract	Extra Heavy Domestic Extra Heavy Contract

Flammability Classification

Europe CE Mark	EN 13501-1 Class Cfl S1	EN 13501-1 Class Cfl S1	EN 13501-1 Class Cfl S1	EN 13501-1 Class Bfl S1	EN 13501-1 Class Bfl S1
----------------	----------------------------	----------------------------	----------------------------	----------------------------	----------------------------

Pattern repeats are shown in 9 row only - repeat details for other qualities upon request

Back cover image: I/Q1912



Brintons

For further information:

+44 (0) 1562 748000

quickweave@brintons.co.uk

© Copyright Brintons Carpets Limited 2021. Brintons is a trademark of Brintons Carpets Limited. E&EO.
All details correct at time of print. All copyright designs are and will remain the property of Brintons Carpets Limited. Any infringement of those rights will be pursued vigorously. Colours are reproduced within the limits of the printing process.