




BY APPOINTMENT  
TO HER MAJESTY THE QUEEN  
CARPET MANUFACTURERS  
BRINTONS CARPETS LIMITED WOODKIMSTER

# Brintons

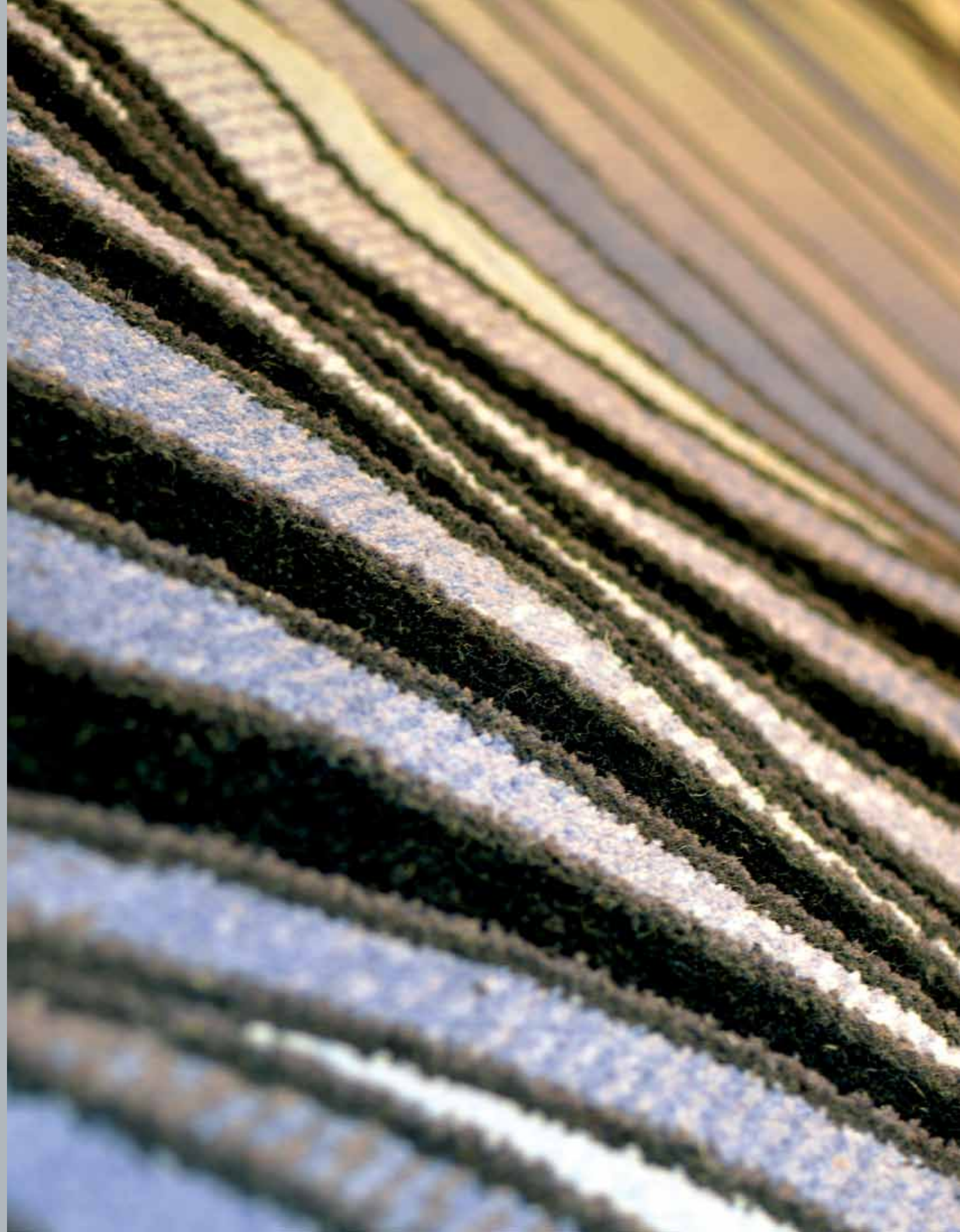
## ①SCILLATION



# 1

# OSCILLATION

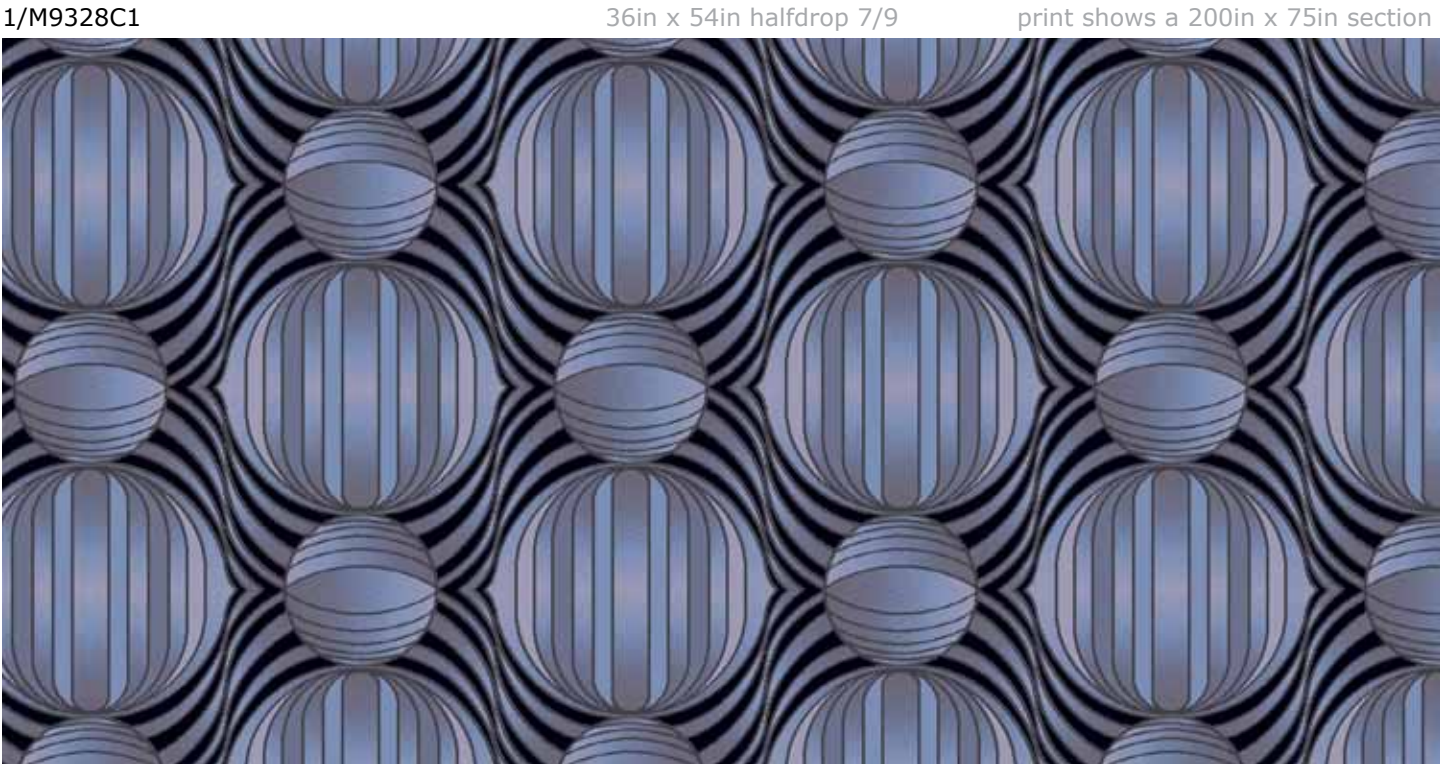
The OSCILLATION series is a new inspirational collection by Brintons. Like the name, various “mini-collections” will be added over time. The first installment is influenced by organic forms from various aquatic environments.





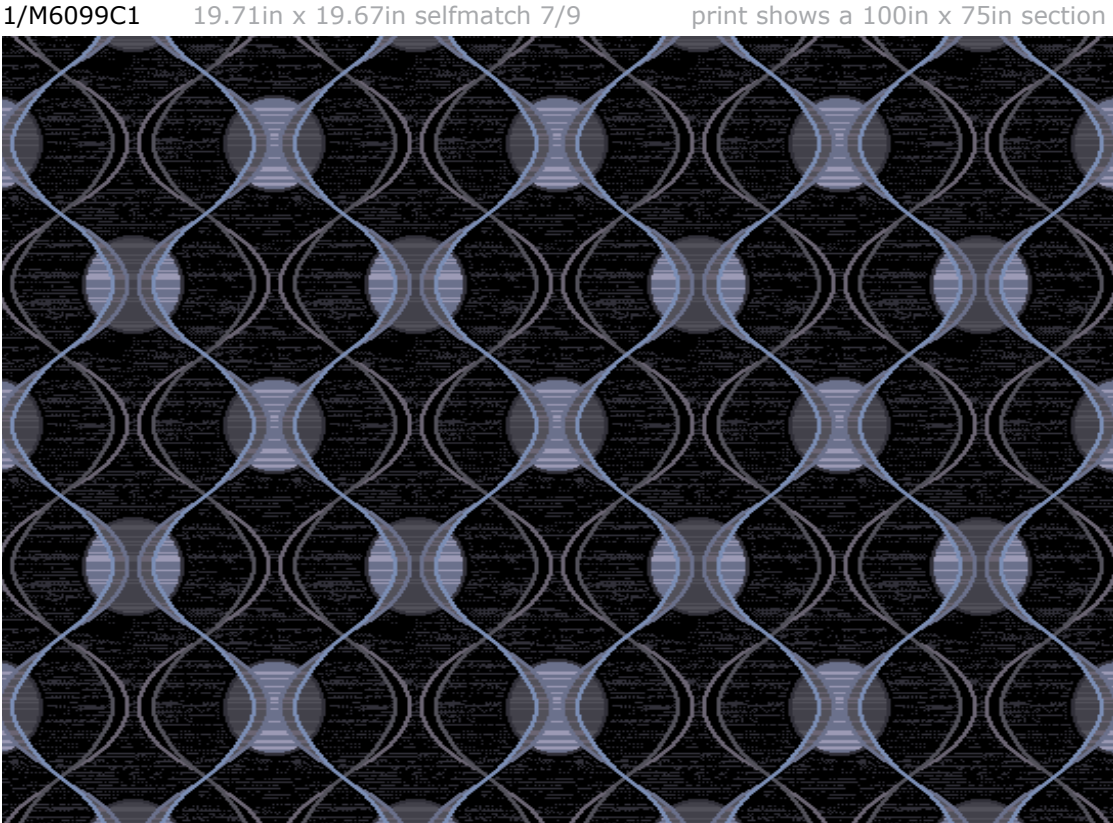


- K20 20-3393
- K19 20-3403
- K18 20-4120
- L17 20-4121
- L16 20-3240
- J6 20-4055
- L21 29-1329



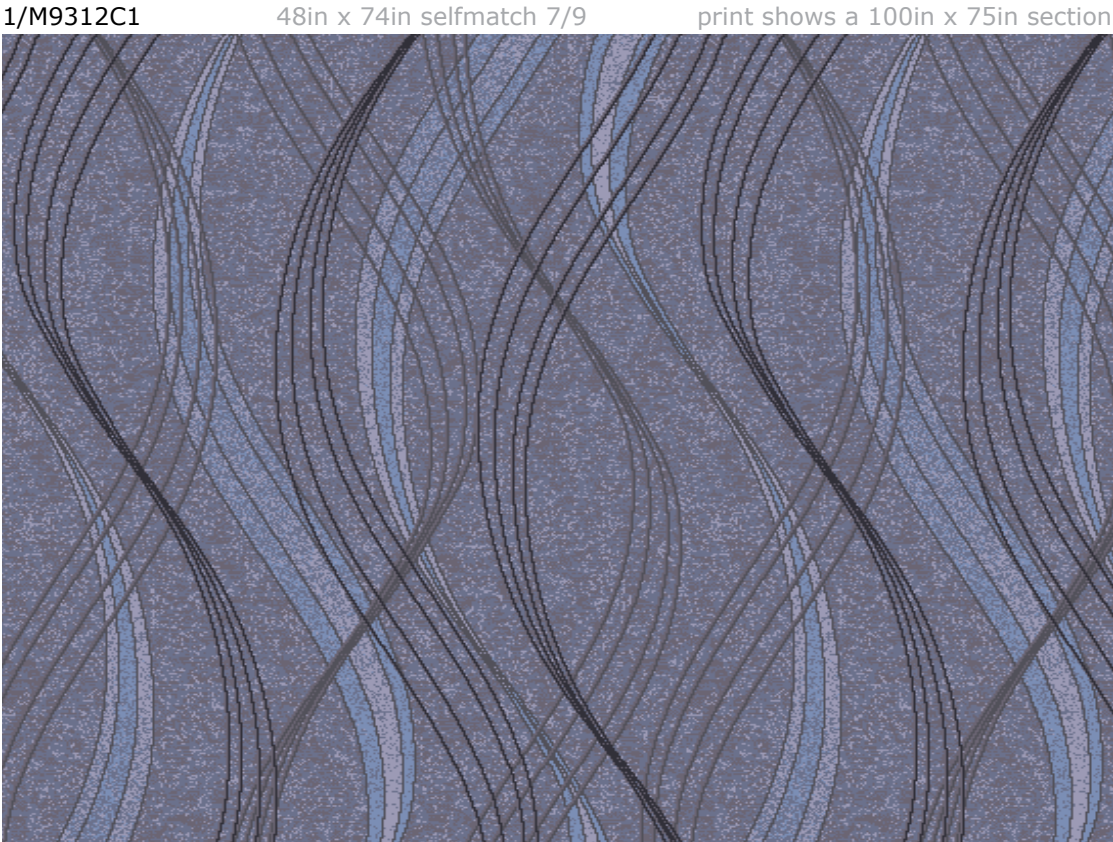
1/M9328C1 36in x 54in halfdrop 7/9 print shows a 200in x 75in section

© Brintons LTD 2013. All copyrights and intellectual property rights existing in our designs are and will remain the property of Brintons LTD. Any infringement of those rights will be pursued vigorously. Colors are reproduced within the limits of the printing process.



1/M6099C1 19.71in x 19.67in selfmatch 7/9 print shows a 100in x 75in section

- K20 20-3393
- K19 20-3403
- K18 20-4120
- L17 20-4121
- L16 20-3240
- J6 20-4055
- L22 20-3200
- L21 29-1329



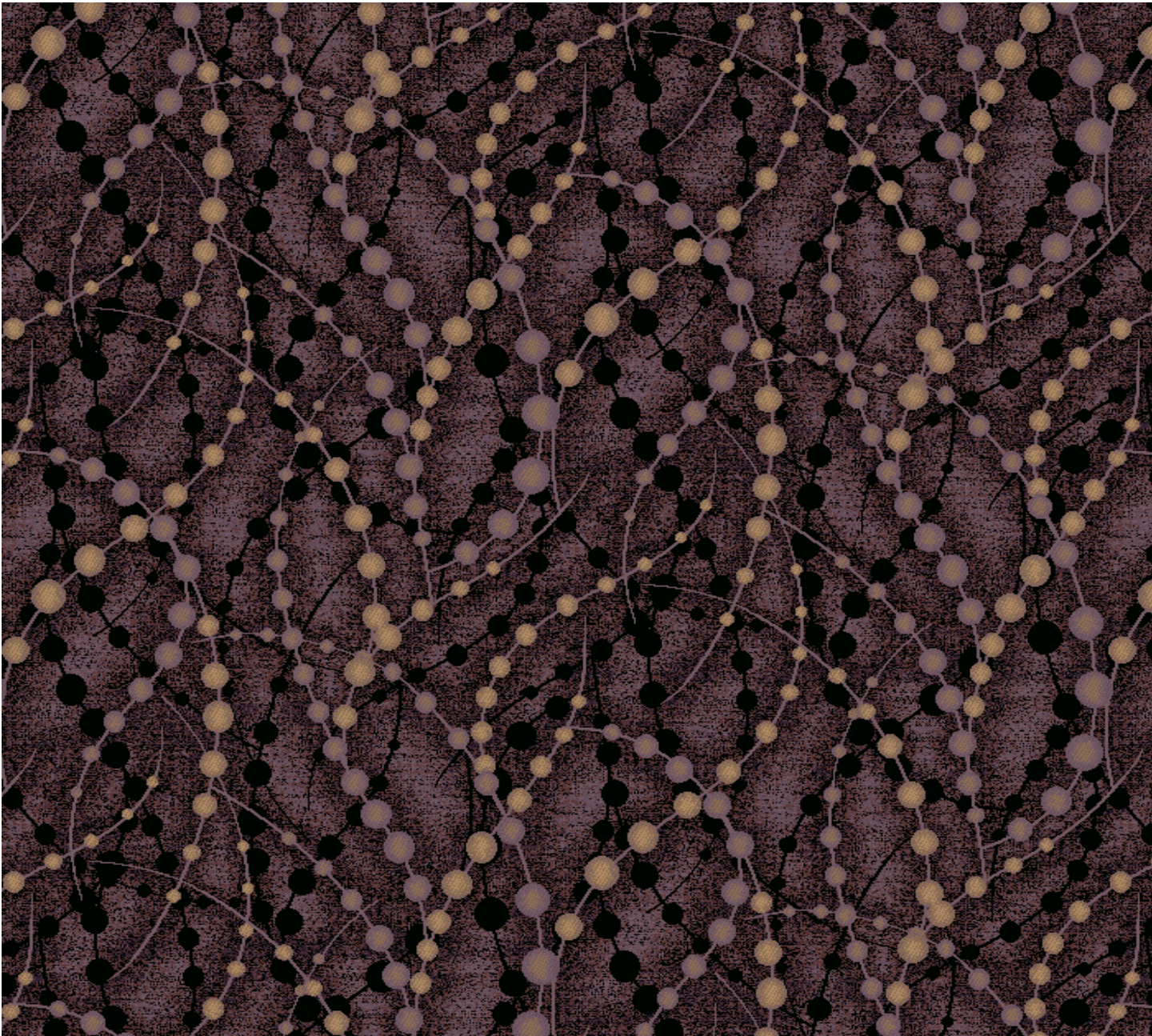
1/M9312C1 48in x 74in selfmatch 7/9 print shows a 100in x 75in section

- K20 20-3393
- K19 20-3403
- K18 20-4120
- L17 20-4121
- L16 20-3240
- J6 20-4055
- L22 20-3200
- L35 23-4238

© Brintons LTD 2013. All copyrights and intellectual property rights existing in our designs are and will remain the property of Brintons LTD. Any infringement of those rights will be pursued vigorously. Colors are reproduced within the limits of the printing process.

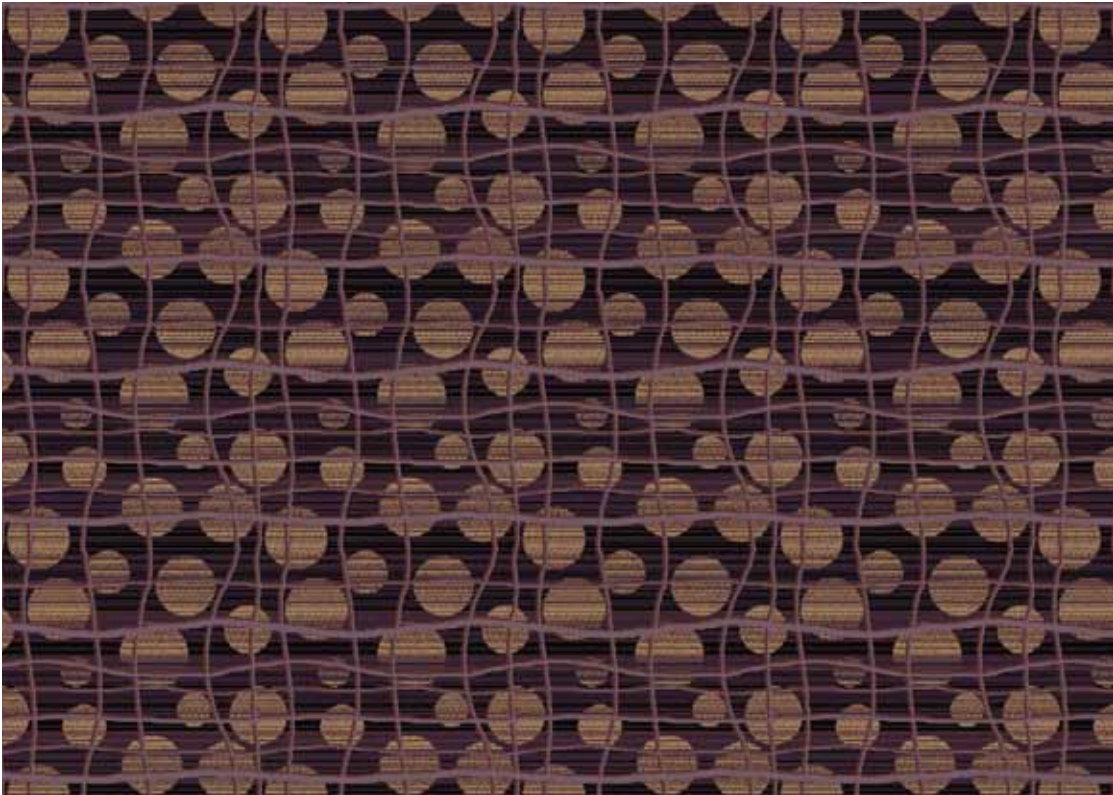


1/M9317C1 48in x 48in halfdrop 7/9 print shows a 100in x 100in section



- |     |  |         |     |  |         |
|-----|--|---------|-----|--|---------|
| I3  |  | 27-4041 | L21 |  | 29-1329 |
| I2  |  | 27-4040 | L12 |  | 29-4101 |
| J23 |  | 28-4170 | K11 |  | 29-4098 |
| C20 |  | 28-4075 | G8  |  | 29-4047 |

1/M6148C1 36in x 36in selfmatch 7/9 print shows a 200in x 150in section



- |     |  |         |
|-----|--|---------|
| I3  |  | 27-4041 |
| I2  |  | 27-4040 |
| J23 |  | 28-4170 |
| C20 |  | 28-4075 |
| L21 |  | 29-1329 |
| L12 |  | 29-4101 |
| K11 |  | 29-4098 |

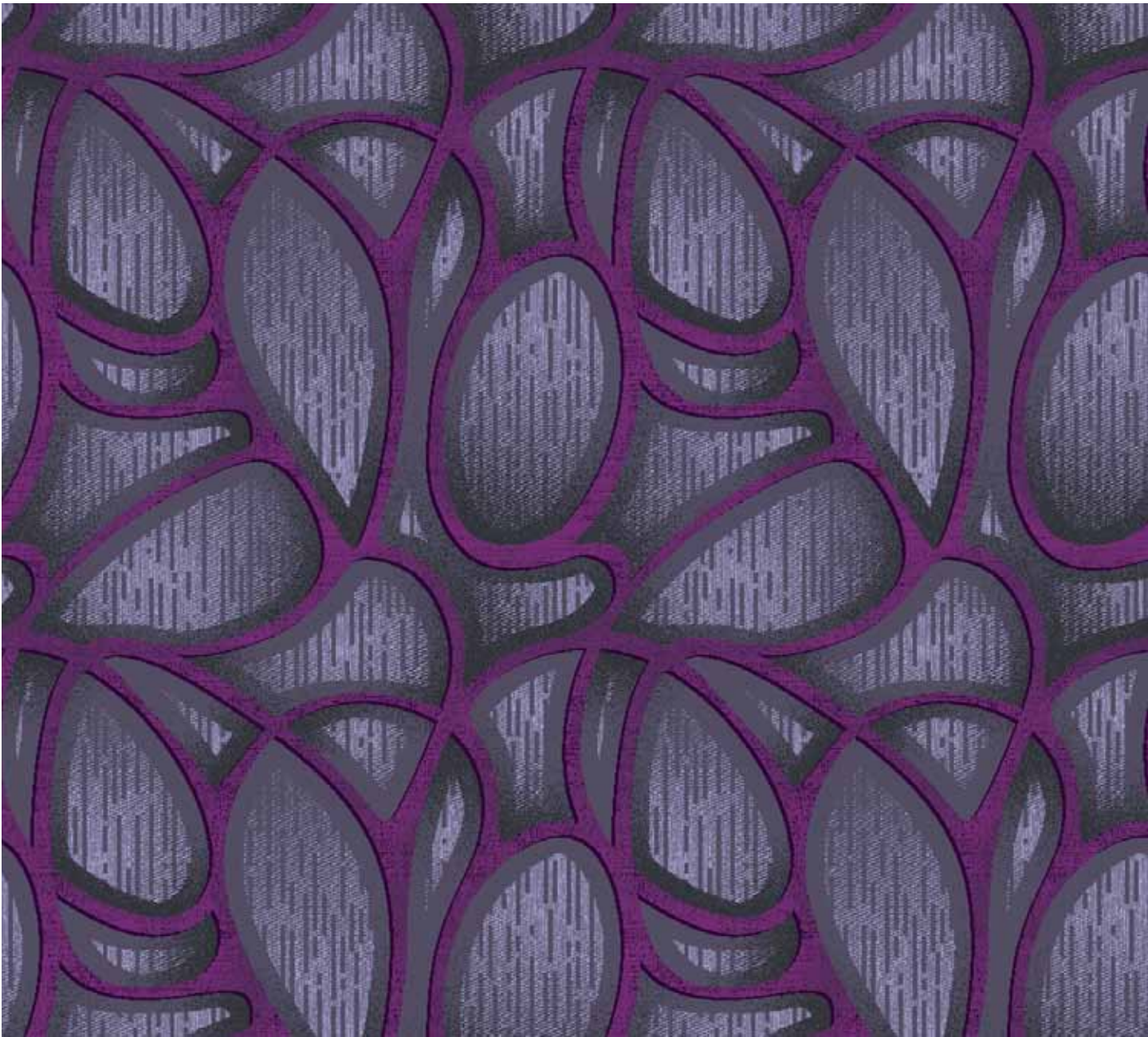
1/M9379C1 48in x 48in halfdrop 7/9 print shows a 200in x 150in section



- |     |  |         |
|-----|--|---------|
| I3  |  | 27-4041 |
| I2  |  | 27-4040 |
| C20 |  | 28-4075 |
| L21 |  | 29-1329 |
| L12 |  | 29-4101 |
| K11 |  | 29-4098 |

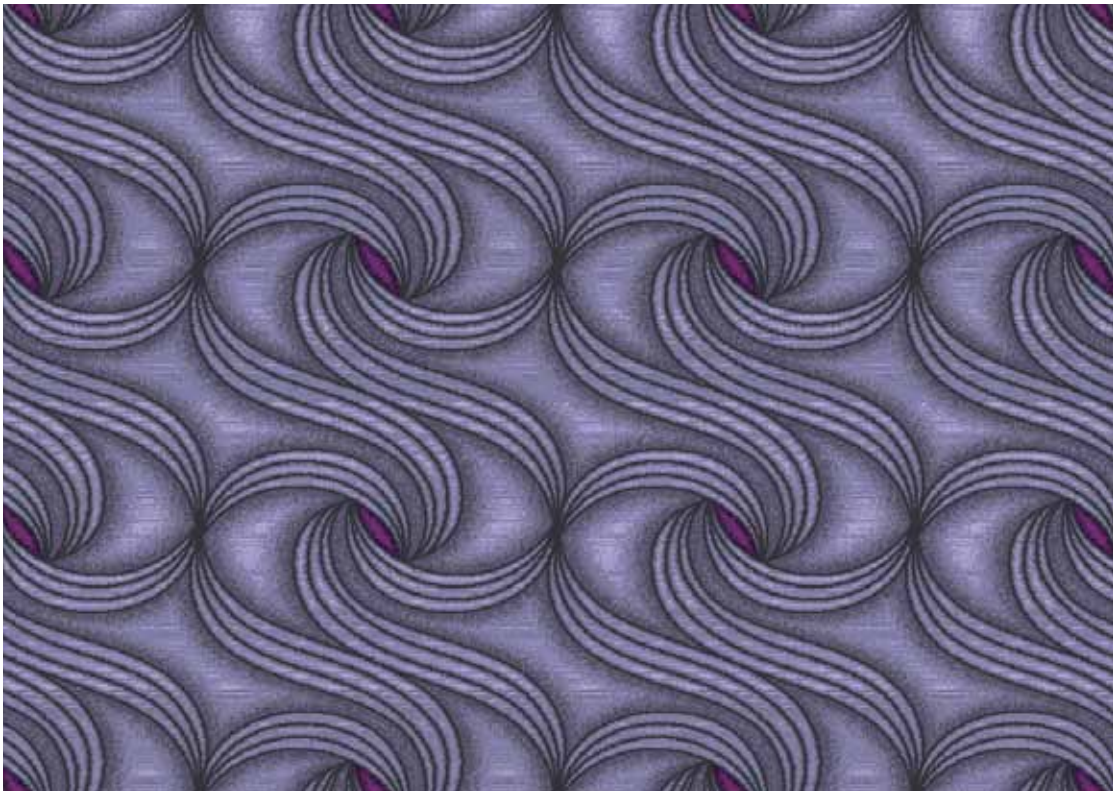


1/S3631C1      72in x 72in selfmatch 7/9      print shows a 200in x 200in section



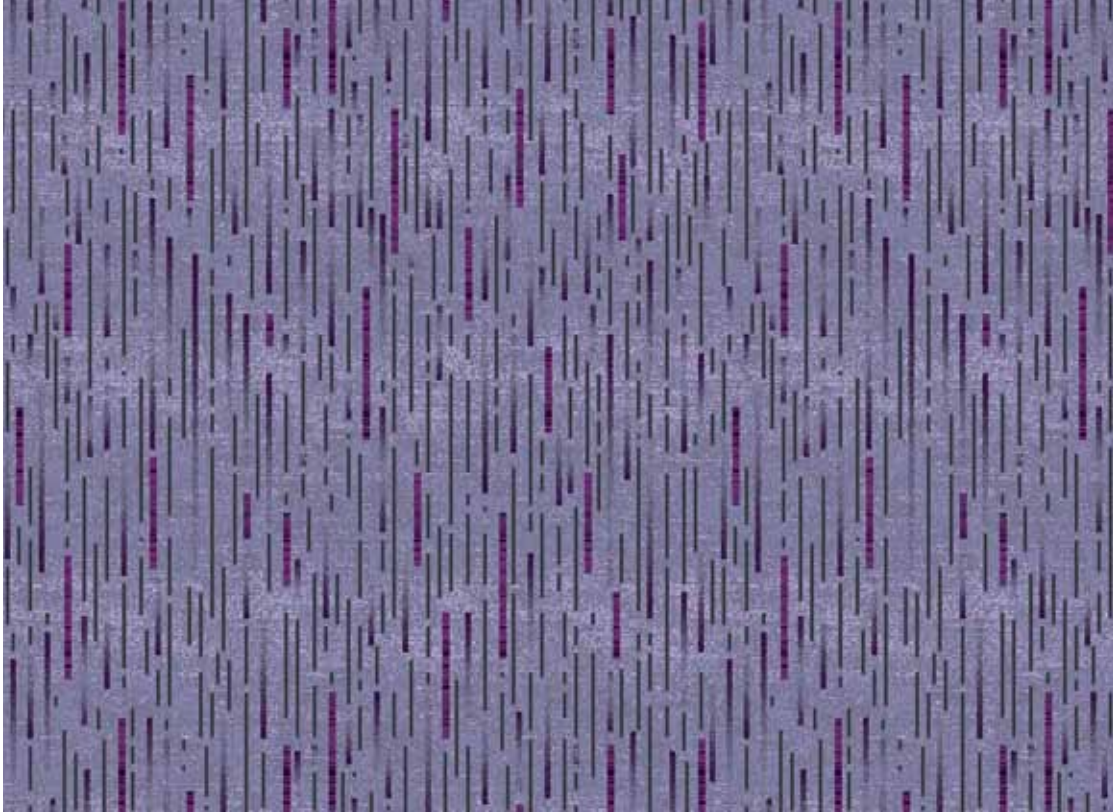
- |     |         |     |         |
|-----|---------|-----|---------|
| H20 | 29-3523 | K16 | 23-3413 |
| H19 | 29-3533 | L36 | 16-0059 |
| H18 | 29-4111 | L38 | 29-4257 |
| K17 | 23-3243 | K38 | 25-4254 |

1/S3636C1      36in x 53in selfmatch 7/9      print shows a 100in x 75in section



- |     |         |
|-----|---------|
| H20 | 29-3523 |
| H19 | 29-3533 |
| H18 | 29-4111 |
| K17 | 23-3243 |
| K16 | 23-3413 |
| L36 | 16-0059 |
| L38 | 29-4257 |
| K38 | 25-4254 |

1/M9315C1      72in x 72in selfmatch 7/9      print shows a 100in x 75in section



- |     |         |
|-----|---------|
| H20 | 29-3523 |
| H19 | 29-3533 |
| H18 | 29-4111 |
| K17 | 23-3243 |
| K16 | 23-3413 |
| L36 | 16-0059 |
| L38 | 29-4257 |
| K38 | 25-4254 |





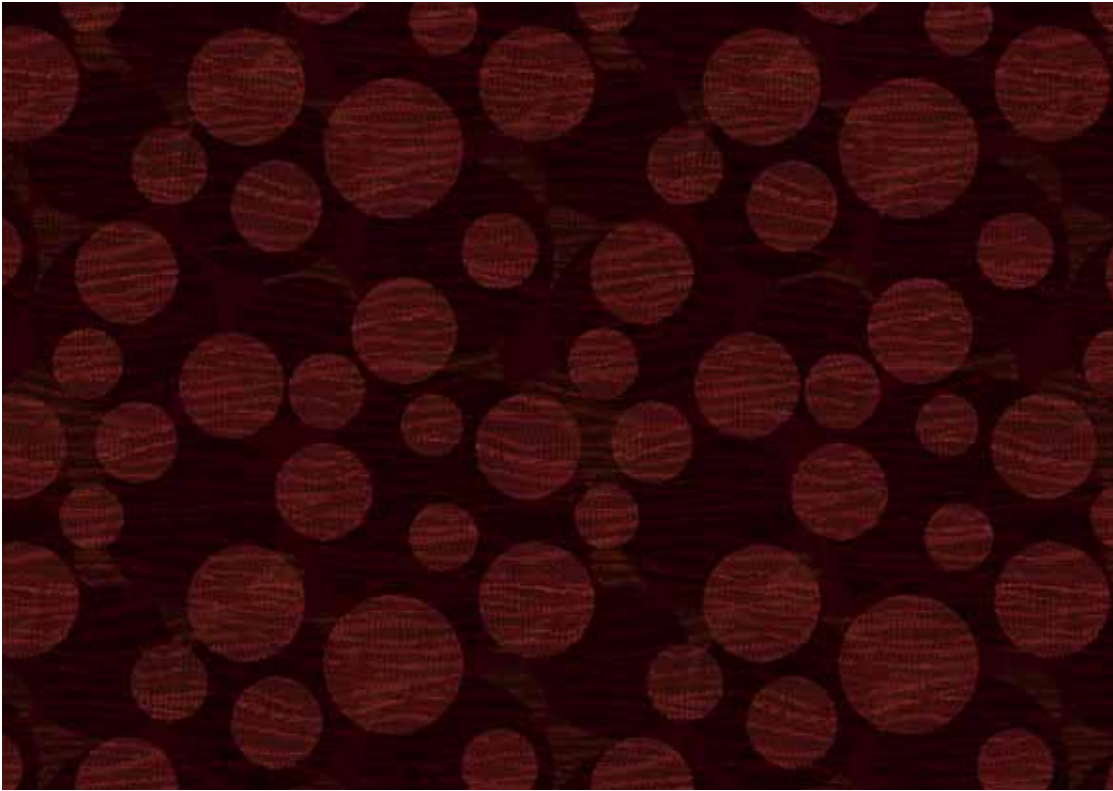
- C35 27-4203
- B24 21-4133
- G1 27-4035
- D9 28-4027
- D10 18-0129
- B10 28-V78
- K1 26-1946
- L2 26-2916

1/M9304C1 72in x 72in halfdrop 7/9 print shows a 200in x 125in section



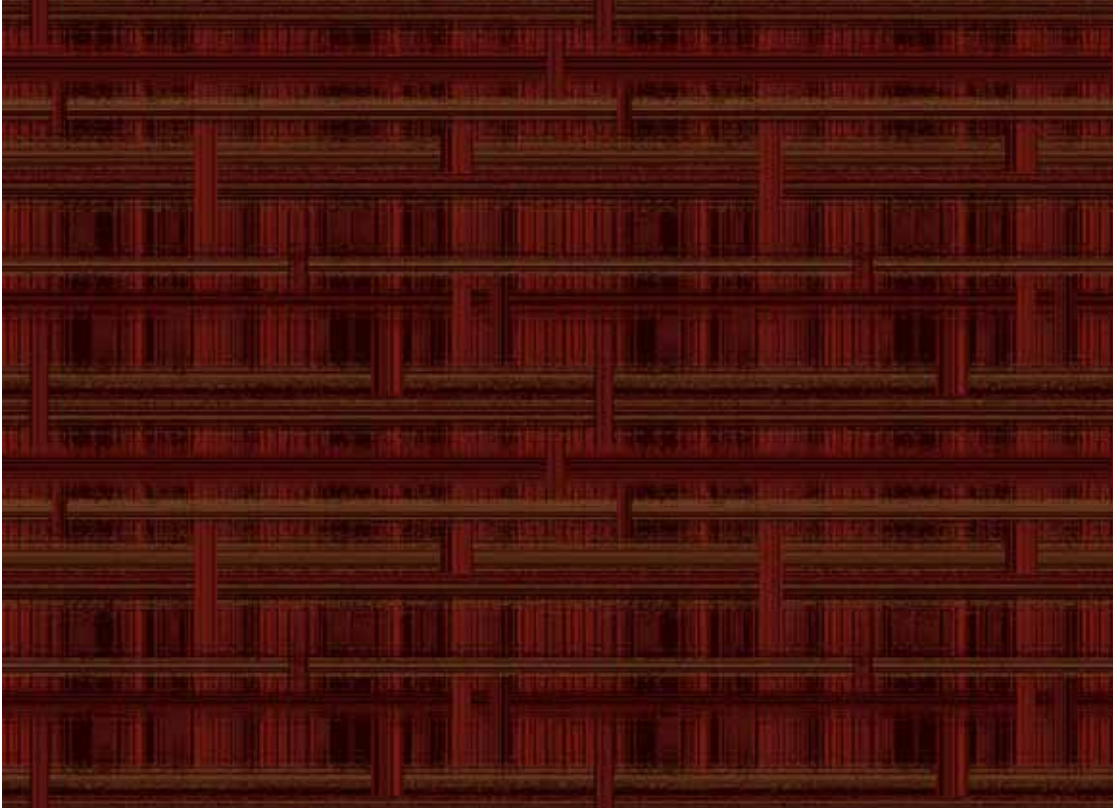
© Brintons LTD 2013. All copyrights and intellectual property rights existing in our designs are and will remain the property of Brintons LTD. Any infringement of those rights will be pursued vigorously. Colors are reproduced within the limits of the printing process.

1/M9316C1 72in x 72in selfmatch 7/9 print shows a 200in x 75in section



- J36 21-4250
- B24 21-4133
- C35 27-4203
- H37 25-4243

1/M9305C1 78.86in x 56in selfmatch 7/10 print shows a 200in x 75in section



- D10 18-0129
- B24 21-4133
- C35 27-4203
- G1 27-4035
- D9 28-4027

© Brintons LTD 2013. All copyrights and intellectual property rights existing in our designs are and will remain the property of Brintons LTD. Any infringement of those rights will be pursued vigorously. Colors are reproduced within the limits of the printing process.

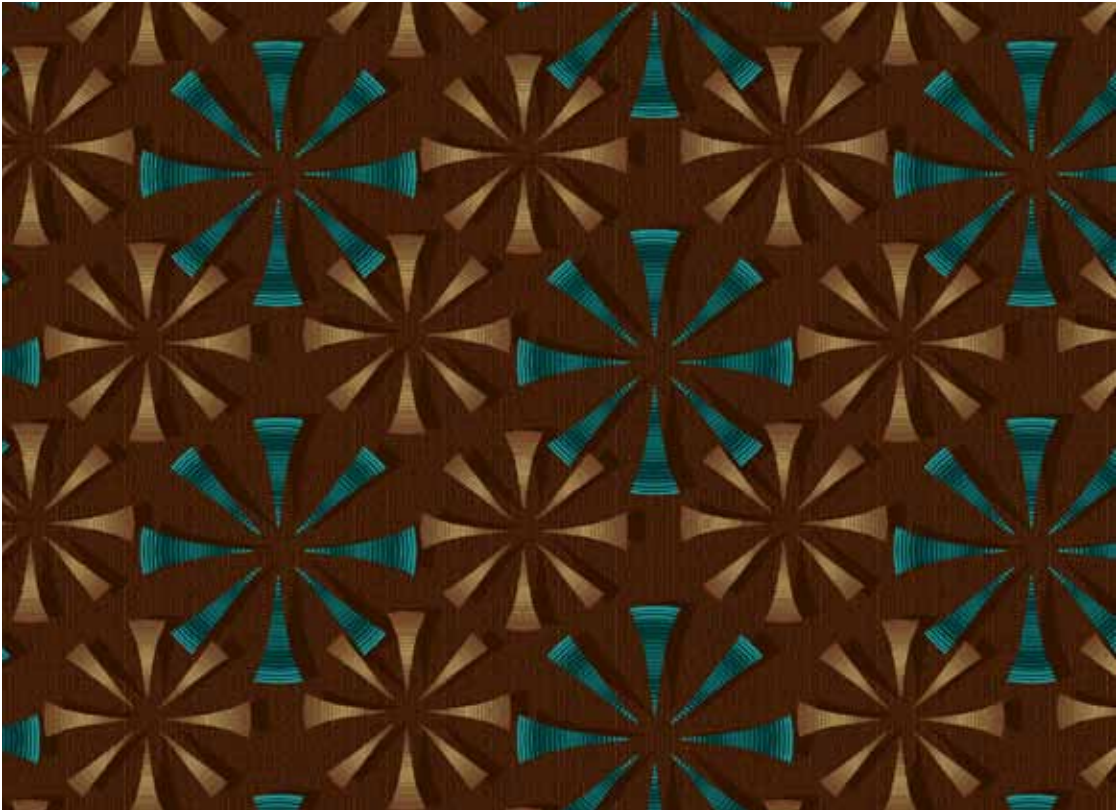


1/M9314C1      72in x 72in halfdrop 7/10      print shows a 150in x 150in section



- |     |         |     |         |
|-----|---------|-----|---------|
| L2  | 26-2916 | D10 | 18-0129 |
| K1  | 26-1946 | H32 | 23-3283 |
| B10 | 28-V78  | H33 | 23-3273 |
| D9  | 28-4027 | H34 | 23-3773 |

1/M9447C1      78.86in x 78.89in halfdrop 7/9      print shows a 300in x 150in section



- |     |         |
|-----|---------|
| L2  | 26-2916 |
| K1  | 26-1946 |
| B10 | 28-V78  |
| D9  | 28-4027 |
| D10 | 18-0129 |
| H32 | 23-3283 |
| H33 | 23-3273 |
| H34 | 23-3773 |

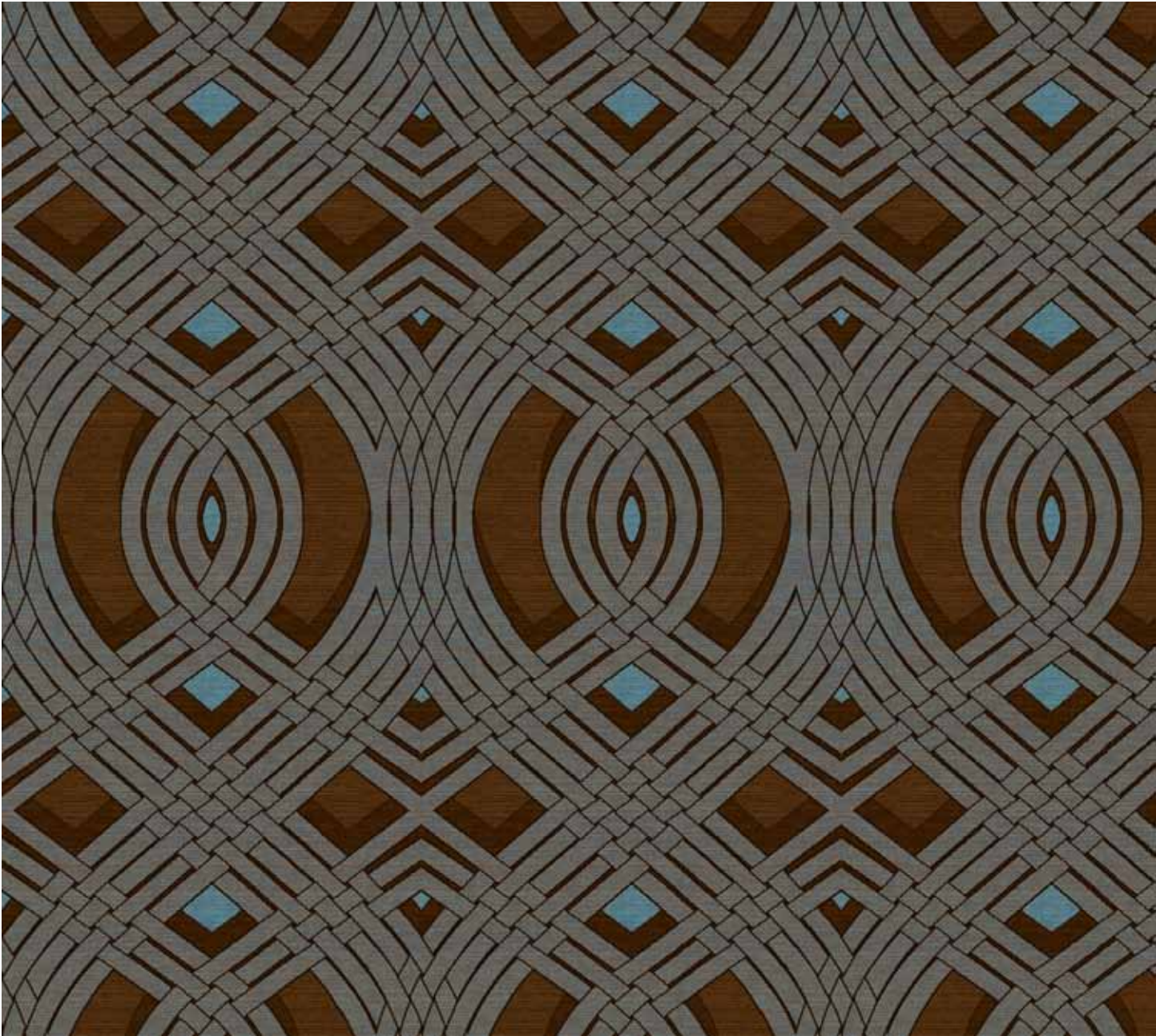
1/M6096C1      19.71in x 24in halfdrop 7/9      print shows a 200in x 75in section



- |     |         |
|-----|---------|
| L2  | 26-2916 |
| K1  | 26-1946 |
| B10 | 28-V78  |
| D9  | 28-4027 |
| D10 | 18-0129 |
| H32 | 23-3283 |
| H33 | 23-3273 |
| H34 | 23-3773 |

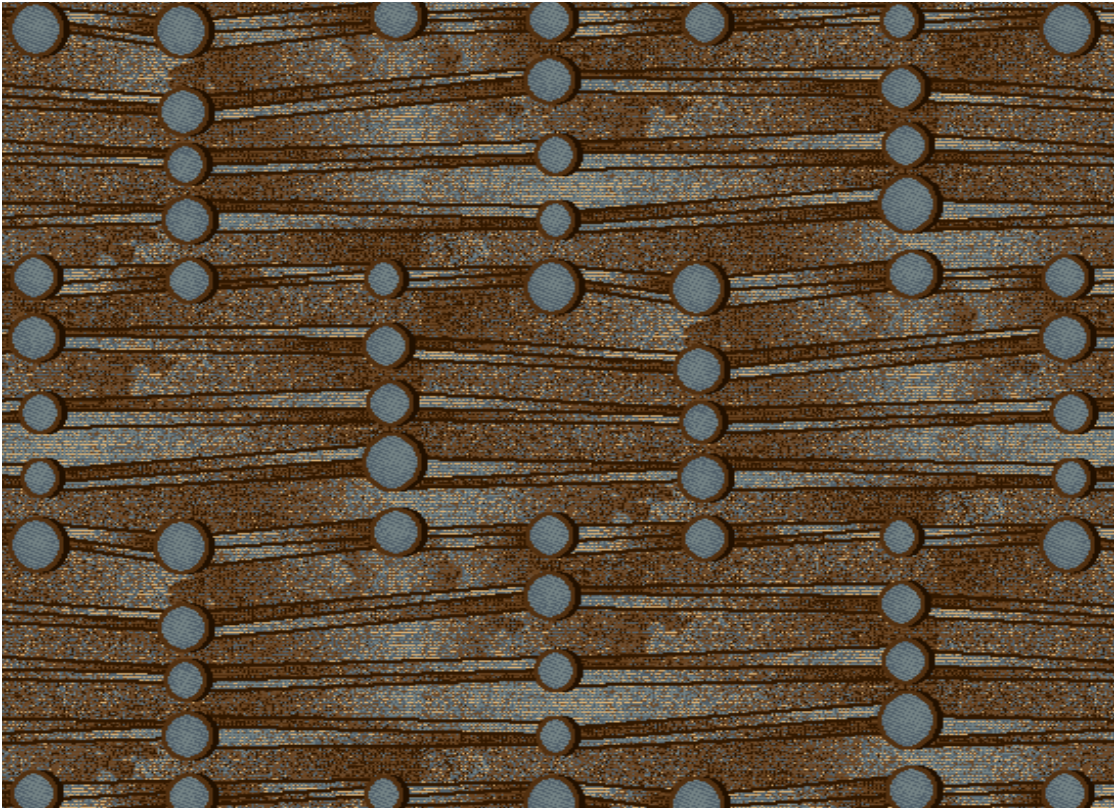


1/S3633C1      72in x 100in selfmatch 7/9      print shows a 200in x 200in section



- |     |         |     |         |
|-----|---------|-----|---------|
| E20 | 18-0379 | D8  | 18-0145 |
| E19 | 28-4079 | A12 | 23-V83  |
| D9  | 28-4027 | A11 | 23-2844 |
| B10 | 28-V78  | J34 | 23-4230 |

1/S3634C1      36in x 36in halfdrop 7/9      print shows a 100in x 75in section



- |     |         |
|-----|---------|
| E20 | 18-0379 |
| E19 | 28-4079 |
| D9  | 28-4027 |
| B10 | 28-V78  |
| D8  | 18-0145 |
| A12 | 23-V83  |
| A11 | 23-2844 |
| F31 | 13-0293 |

1/S3635C1      72in x 72in halfdrop 7/9      print shows a 100in x 75in section



- |     |         |
|-----|---------|
| E20 | 18-0379 |
| E19 | 28-4079 |
| D9  | 28-4027 |
| B10 | 28-V78  |
| D8  | 18-0145 |
| A12 | 23-V83  |
| A11 | 23-2844 |

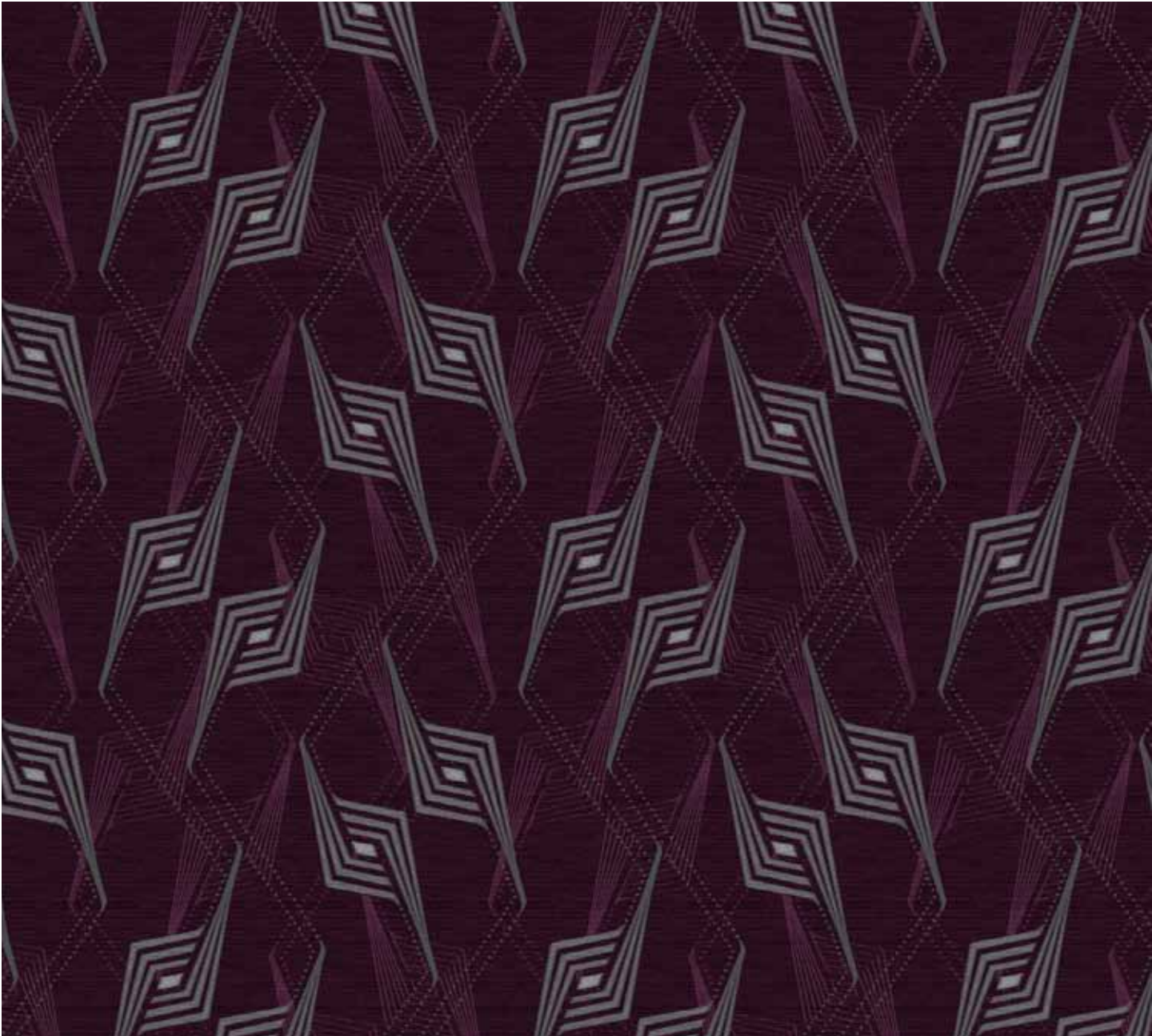


1/N9938C1                      72in x 72in halfdrop 7/9                      print shows a 150in x 150in section



- |     |   |         |     |   |         |
|-----|---|---------|-----|---|---------|
| L36 | ■ | 16-0059 | J10 | ■ | 20-3183 |
| L38 | ■ | 29-4257 | I10 | ■ | 17-0040 |
| K38 | ■ | 25-4254 | I9  | ■ | 20-4054 |
| L39 | ■ | 29-4258 | G8  | ■ | 29-4047 |

1/N7740C1                      72in x 72in selfmatch 7/9                      print shows a 200in x 200in section



- |     |   |         |     |   |         |
|-----|---|---------|-----|---|---------|
| L36 | ■ | 16-0059 | J10 | ■ | 20-3183 |
| L38 | ■ | 29-4257 | I10 | ■ | 17-0040 |
| K38 | ■ | 25-4254 | I9  | ■ | 20-4054 |
| L39 | ■ | 29-4258 | G8  | ■ | 29-4047 |



1/P4532C1      36in x 52in halfdrop 7/9      print shows a 100in x 100in section



- |     |  |         |     |  |         |
|-----|--|---------|-----|--|---------|
| B27 |  | 23-4152 | A15 |  | 23-3033 |
| A12 |  | 23-V83  | D25 |  | 27-4139 |
| A13 |  | 23-2830 | E25 |  | 27-4144 |
| A14 |  | 23-3663 | D23 |  | 27-4138 |

1/P7528C1      36in x 36in halfdrop 7/9      print shows a 100in x 75in section



- |     |  |         |
|-----|--|---------|
| B27 |  | 23-4152 |
| A12 |  | 23-V83  |
| A13 |  | 23-2830 |
| A14 |  | 23-3663 |
| A15 |  | 23-3033 |
| D25 |  | 27-4139 |
| E25 |  | 27-4144 |
| D23 |  | 27-4138 |

1/M9361C1      18in x 15in selfmatch 7/9      print shows a 100in x 75in section



- |     |  |         |
|-----|--|---------|
| B27 |  | 23-4152 |
| A12 |  | 23-V83  |
| A13 |  | 23-2830 |
| A14 |  | 23-3663 |
| A15 |  | 23-3033 |
| D25 |  | 27-4139 |
| E25 |  | 27-4144 |
| D23 |  | 27-4138 |



J7

20-4056

I17

23-4112

I10

17-0040

I9

20-4054

I8

20-4053

I19

23-4114

I18

23-4113

I16

23-3053

1/M7670C1

26.29in x 28in selfmatch 7/9

print shows a 100in x 75in section

I8

20-4053

I19

23-4114

I18

23-4113

I16

23-3053

1/M9354C1

39.43in x 40.29in selfmatch 7/7

print shows a 100in x 75in section

J7

20-4056

I17

23-4112

I10

17-0040

I9

20-4054

I8

20-4053

I19

23-4114

I18

23-4113

I16

23-3053

1/M7683C1

13.14in x 13.33in selfmatch 7/9

print shows a 100in x 75in section

J7

20-4056

I17

23-4112

I10

17-0040

I9

20-4054

I8

20-4053

I19

23-4114

I18

23-4113

I16

23-3053

1/M7686C1

19.71in x 26.50in selfmatch 7/10

print shows a 100in x 75in section



I10

17-0040

I9

20-4054

I8

20-4053

I7

20-4052

I6

20-L8712

A28

23-4151

A29

15-0124

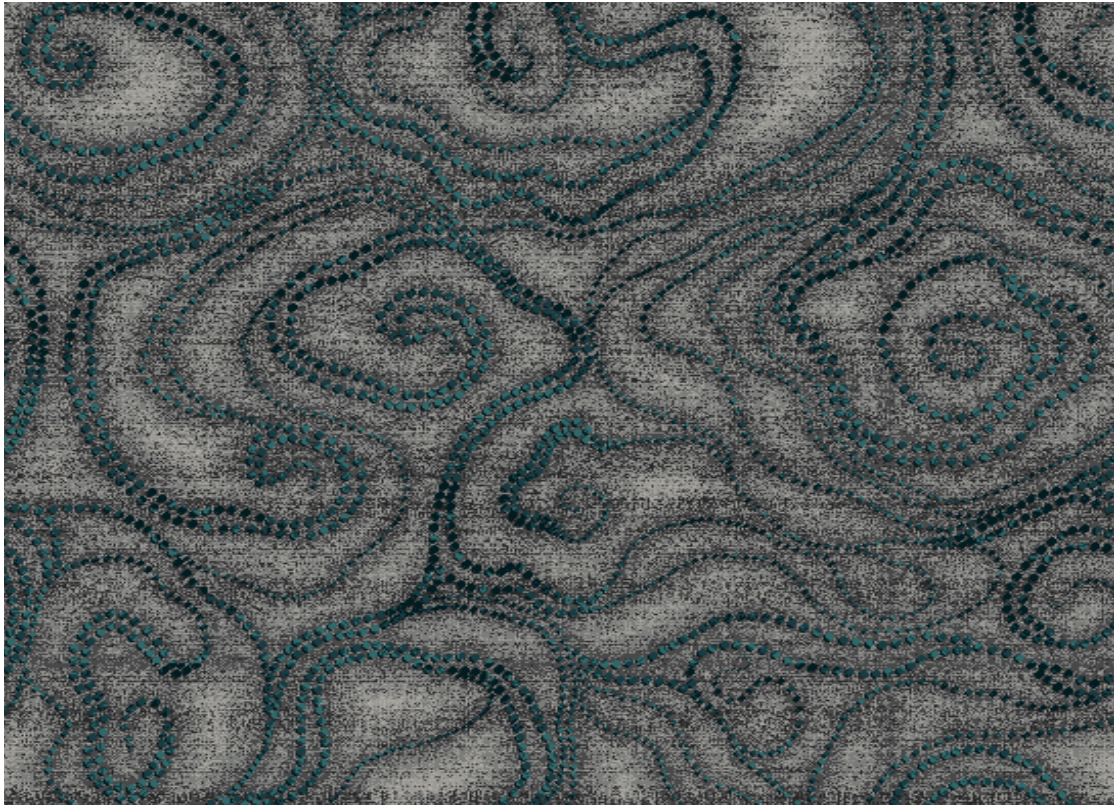
A30

15-0123

1/M7684C1

78.86in x 78.89in selfmatch 7/9

print shows a 100in x 75in section



I10

17-0040

I9

20-4054

I8

20-4053

I7

20-4052

A28

23-4151

A29

15-0124


A30

15-0123

1/M7659C1

78.86in x 78.89in halfdrop 7/9

print shows a 100in x 75in section



I10

17-0040

I9

20-4054

I8

20-4053

I7

20-4052

I6

20-L8712

A28

23-4151

A29

15-0124

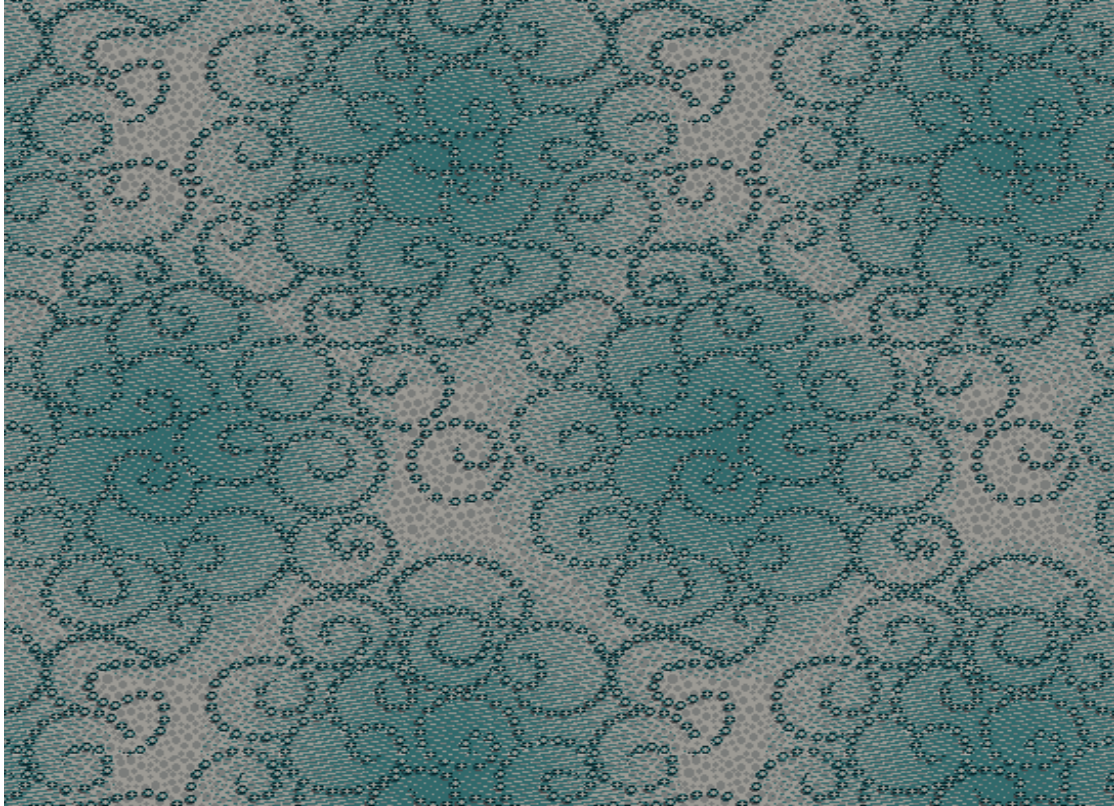
A30

15-0123

1/M7629C1

39.43in x 44.11in selfmatch 7/9

print shows a 100in x 75in section



I9

20-4054

I8

20-4053

I7

20-4052

A28

23-4151

A29

15-0124

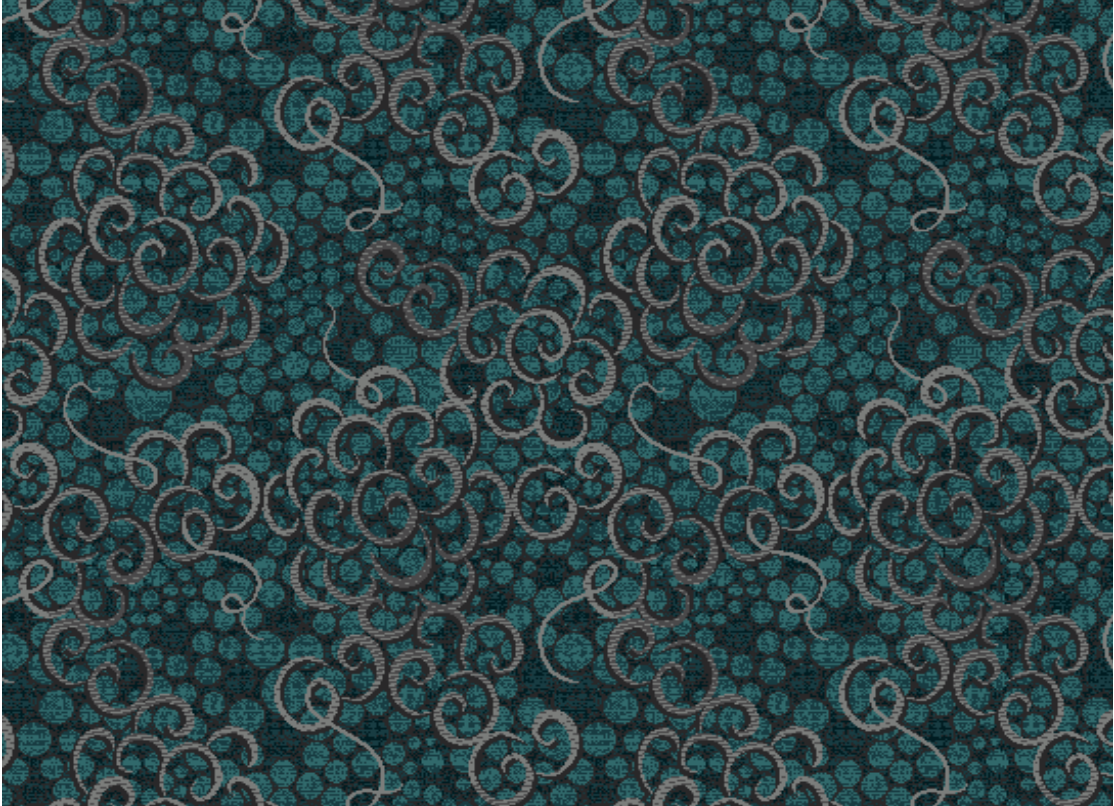
A30

15-0123

1/M7676C1

39.43in x 40.50in selfmatch 7/8

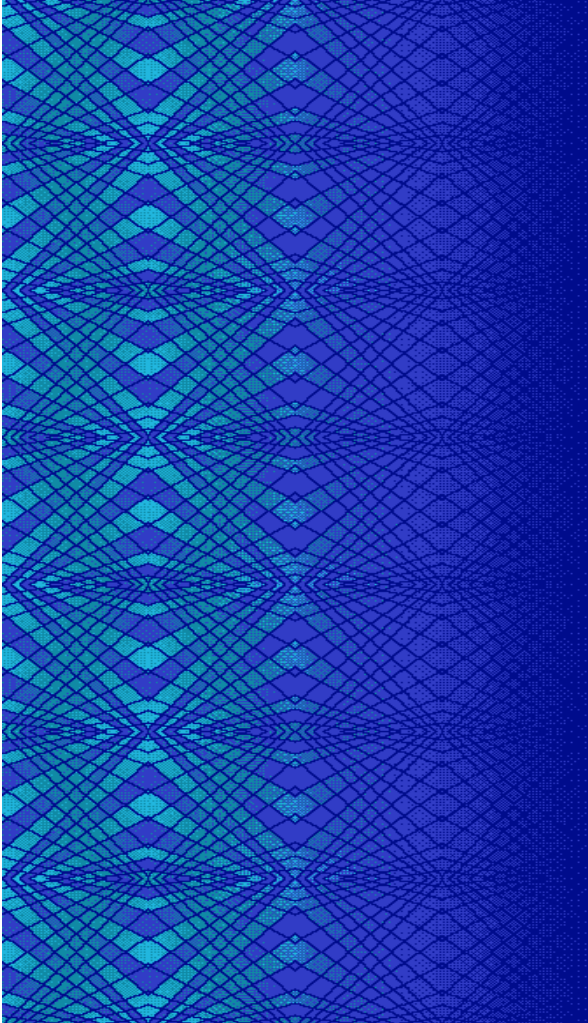
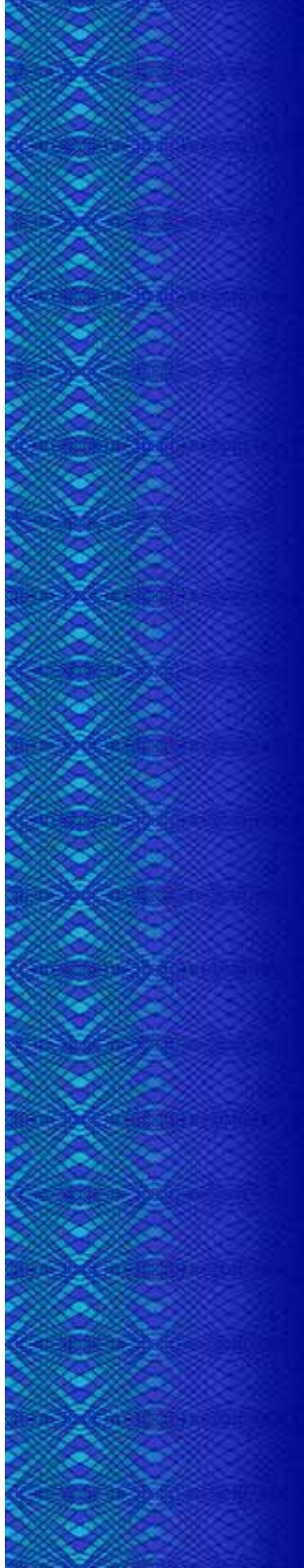
print shows a 100in x 75in section





1/M9385C1

print shows 48in x 252in



zoomed detail section 48in x 84in  
design repeat 48in x 84in

- K32 23-2855
- K33 23-4232
- H34 23-3773
- H33 23-3273

corridors

1/M9384C1

print shows 48in x 252in



zoomed detail section 48in x 84in  
design repeat 48in x 288in

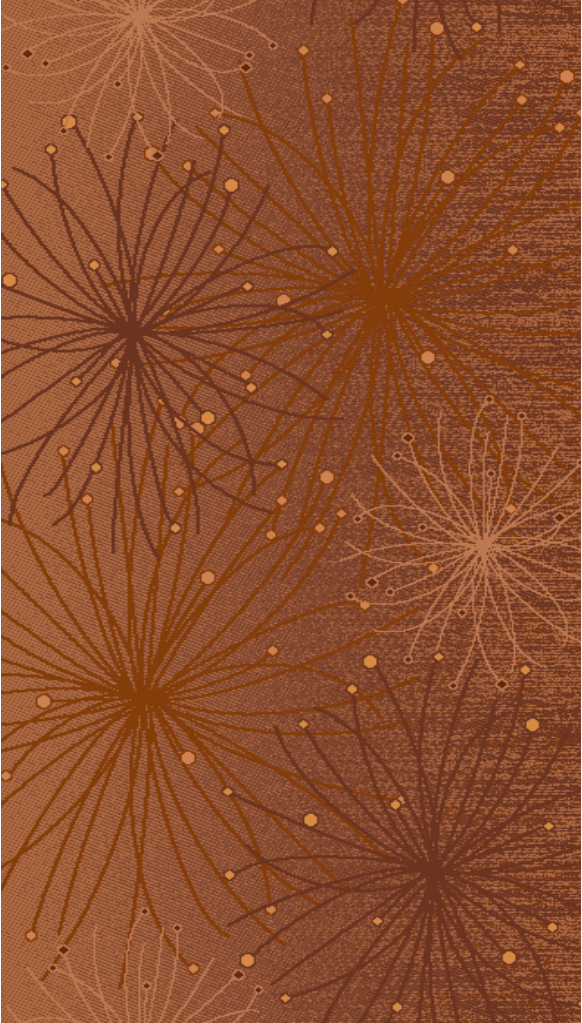
- E32 26-3276
- F32 26-4207
- G23 26-4161
- F26 24-3694
- E40 24-3744
- F29 24-3664

corridors



1/M9366C1

print shows 48in x 252in



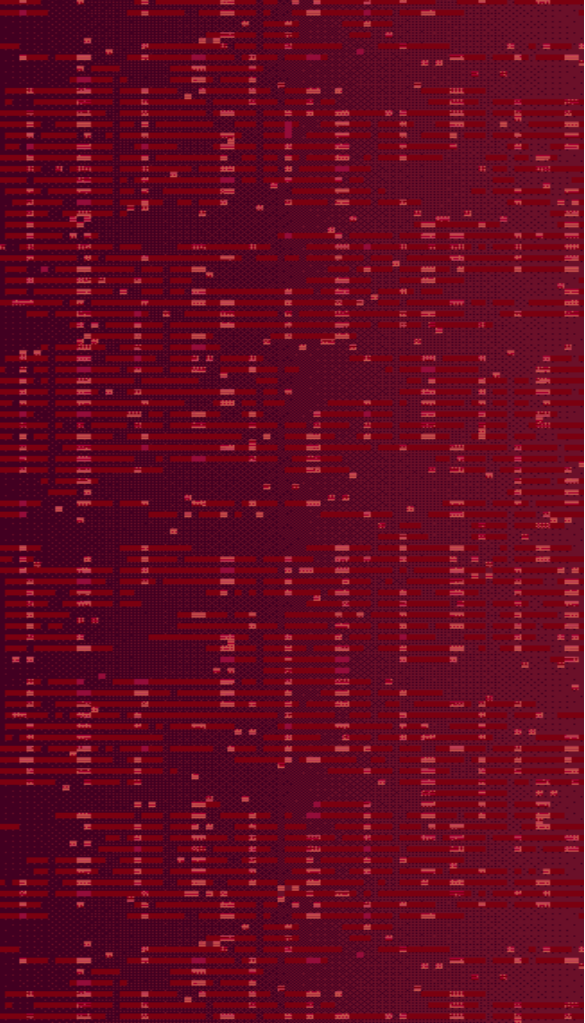
zoomed detail section 48in x 84in  
size of repeat is 48in x 84in

corridors

- G1 27-4035
- I21 27-3126
- I22 27-3136
- H22 27-4164
- I23 27-4167
- G4 27-4036
- I24 18-0378
- I25 18-0133

1/M6106C1

print shows 48in x 252in



zoomed detail section 48in x 84in  
design repeat 48in x 72in

corridors

- J36 21-4250
- I36 21-3171
- I37 21-3181
- I38 25-4247
- H37 25-4243
- G36 21-V11
- D22 27-3405
- H38 25-4244



1/P2623C1 print shows 108in x 144in 7/7



- |     |          |     |         |
|-----|----------|-----|---------|
| D11 | 24-V144  | D15 | 24-3424 |
| D12 | 24-MB005 | C15 | 14-0281 |
| D13 | 24-MB003 | L23 | 20-4174 |
| G30 | 20-4176  | L24 | 20-4193 |
| D14 | 24-2708  | L25 | 20-3040 |

hand tufted

1/M9337C1 print shows 245in x 245in 7/7

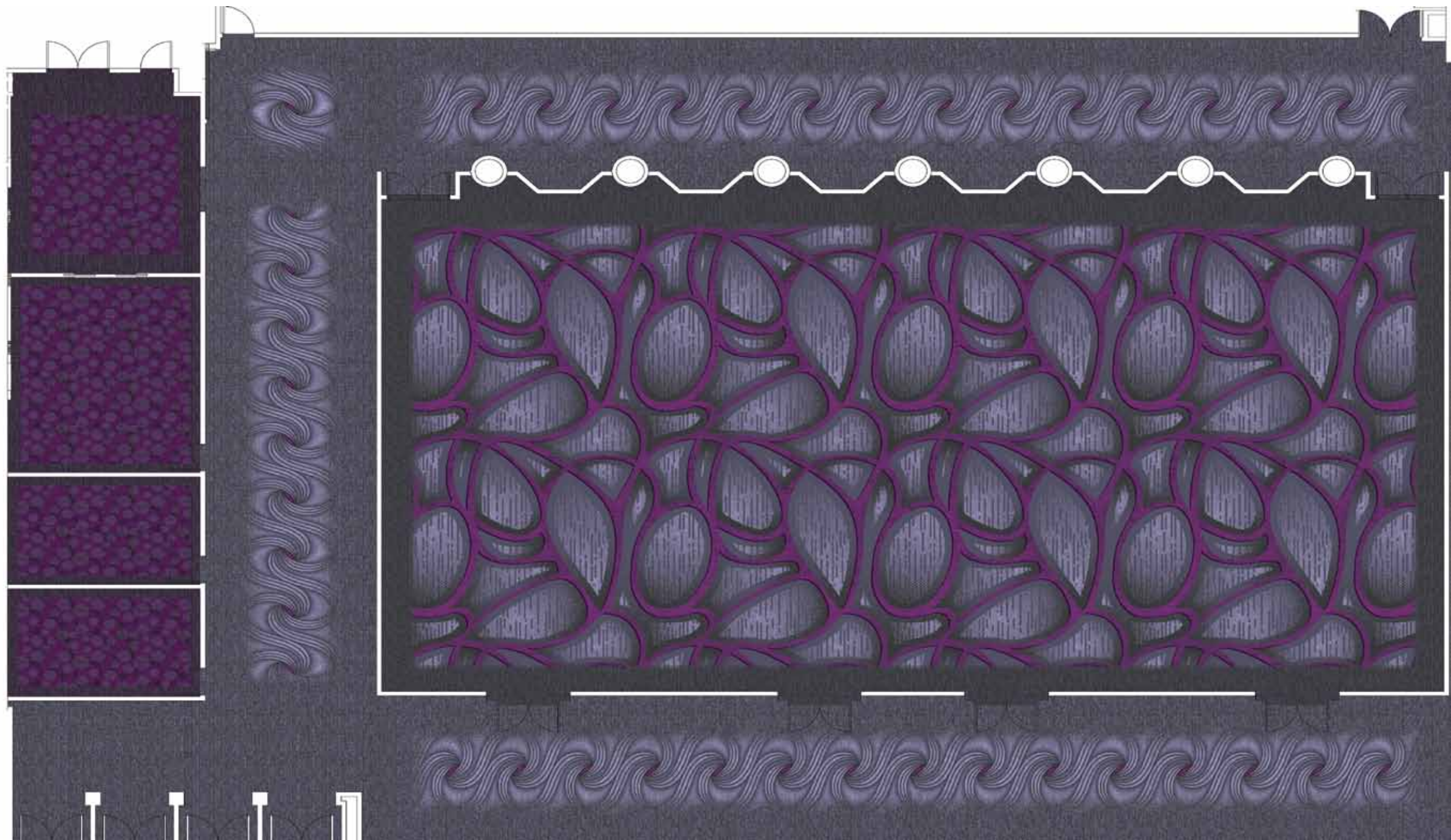


- |     |         |     |         |     |         |
|-----|---------|-----|---------|-----|---------|
| A20 | 29-2507 | A16 | 29-3433 | J10 | 20-3183 |
| A19 | 29-3453 | L20 | 20-4124 | L16 | 20-3240 |
| A18 | 29-3443 | L17 | 20-4121 | I9  | 20-4054 |
| A17 | 29-4071 | J8  | 20-V10  | G8  | 29-4047 |

hand tufted



ballroom, prefunction & meeting room concept



designs scaled to fit space





BY APPOINTMENT  
TO HER MAJESTY THE QUEEN  
CARPET MANUFACTURERS  
BRINTONS CARPETS LIMITED, HIDEDEWMINSTER

# Brintons

making the world a more beautiful place

[www.brintons.net](http://www.brintons.net)

Brintons - USA  
Tel: +1 678 594 9300  
Fax: +1 678 594 9301  
Email: [brintons@brintonsusa.com](mailto:brintons@brintonsusa.com)

Brintons Limited - UK  
Global Headquarters  
Tel: +44 (0) 1562 635 665  
Fax: +44 (0) 1562 634 737  
Email: [solutions@brintons.co.uk](mailto:solutions@brintons.co.uk)

Brintons - PTY LTD - AUSTRALIA  
Tel: +61 (0) 3 5226 3200  
Fax: +61 (0) 3 5226 0355  
Email: [enquiries@brintons.com.au](mailto:enquiries@brintons.com.au)