

Naturals

A QuickWeave Collection
for Guest Rooms



Brintons



Naturals

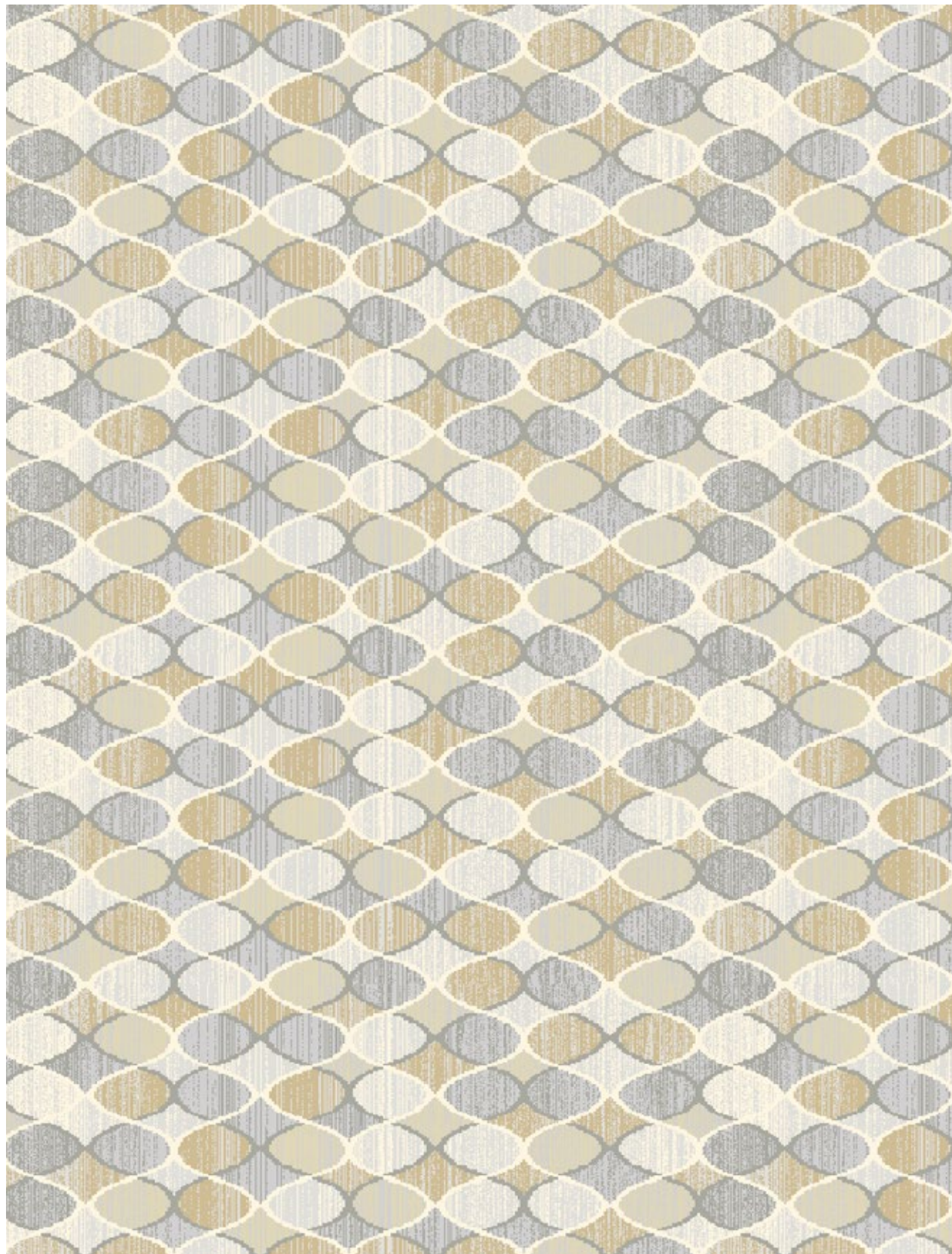
A QuickWeave Collection for Guest Rooms

Brintons Naturals palette for QuickWeave uses 100% undyed British Wool. An eco-friendly alternative to synthetic or dyed yarns, 100% undyed wool is recyclable, biodegradable and uses less resources throughout the manufacturing process making it a more sustainable choice.

The special wool yarns are created by blending together fleece from different colored sheep or different parts of the sheep's body to create a set of 8 beautiful shades of neutrals.

The Naturals collection and palette are available on our online design tool at dso.brintons.net, for recoloration to fit any guest room design brief.

*a collection made from
8 unique undyed colors*

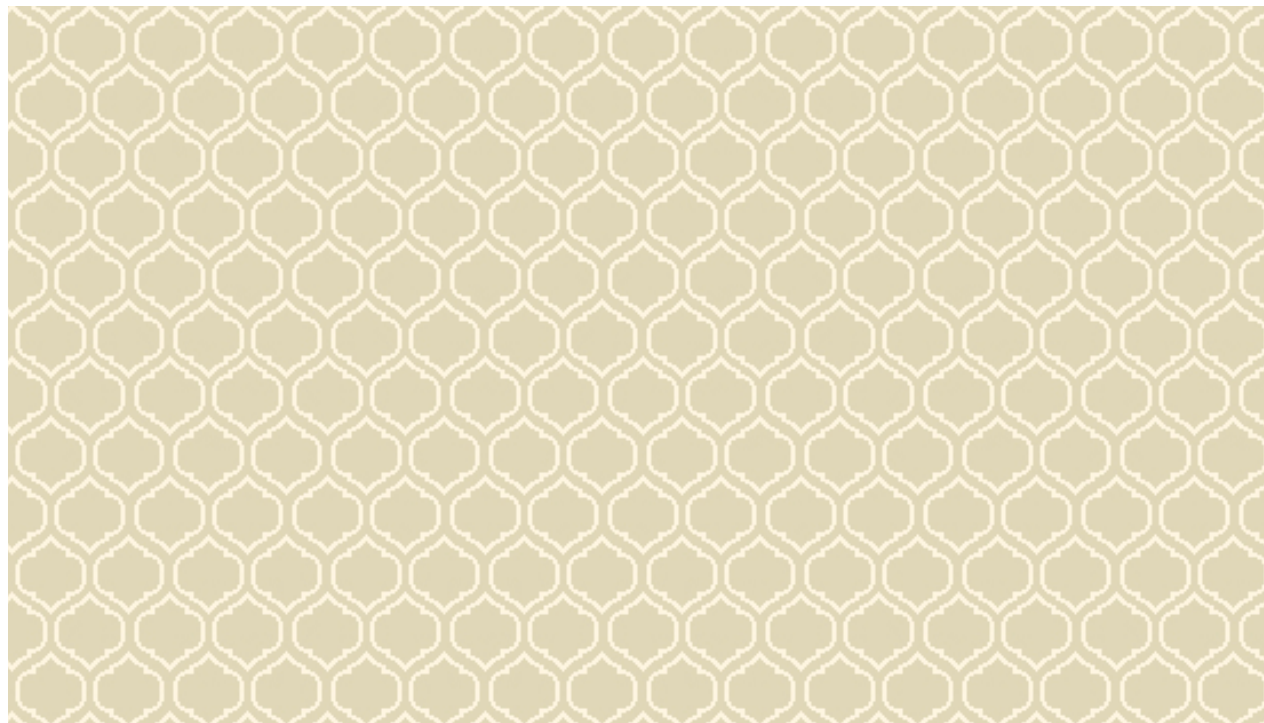


Design: 2/Q1295 Repeat: 78.9" x 37.3"

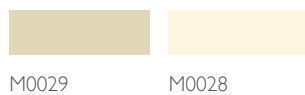


Design: 36/Q1290 Repeat: 157.7" x 150"





Design: I/Q2001 Repeat: 9.9" x 14.7"



M0029 M0028



Design: 2/Q1434 Repeat: 78.9" x 63.6"



M0029 M0028 M0024 M0030 M0025 M0031 M0026



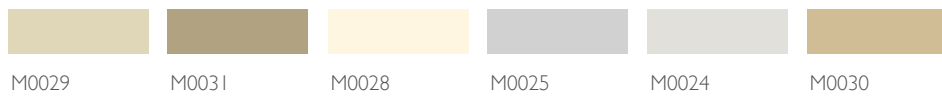
Design: I/Q1920 Repeat: 19.7" x 9"



M0030 M0029 M0025 M0026 M0028 M0031 M0027



Design: 5/Q1364 Repeat: 78.9" x 78.9"



M0029 M0031 M0028 M0025 M0024 M0030



Design: 33/Q1428 Repeat: 78.9" x 66.7"



M0028 M0029 M0024 M0027 M0030 M0025 M0026 M0031

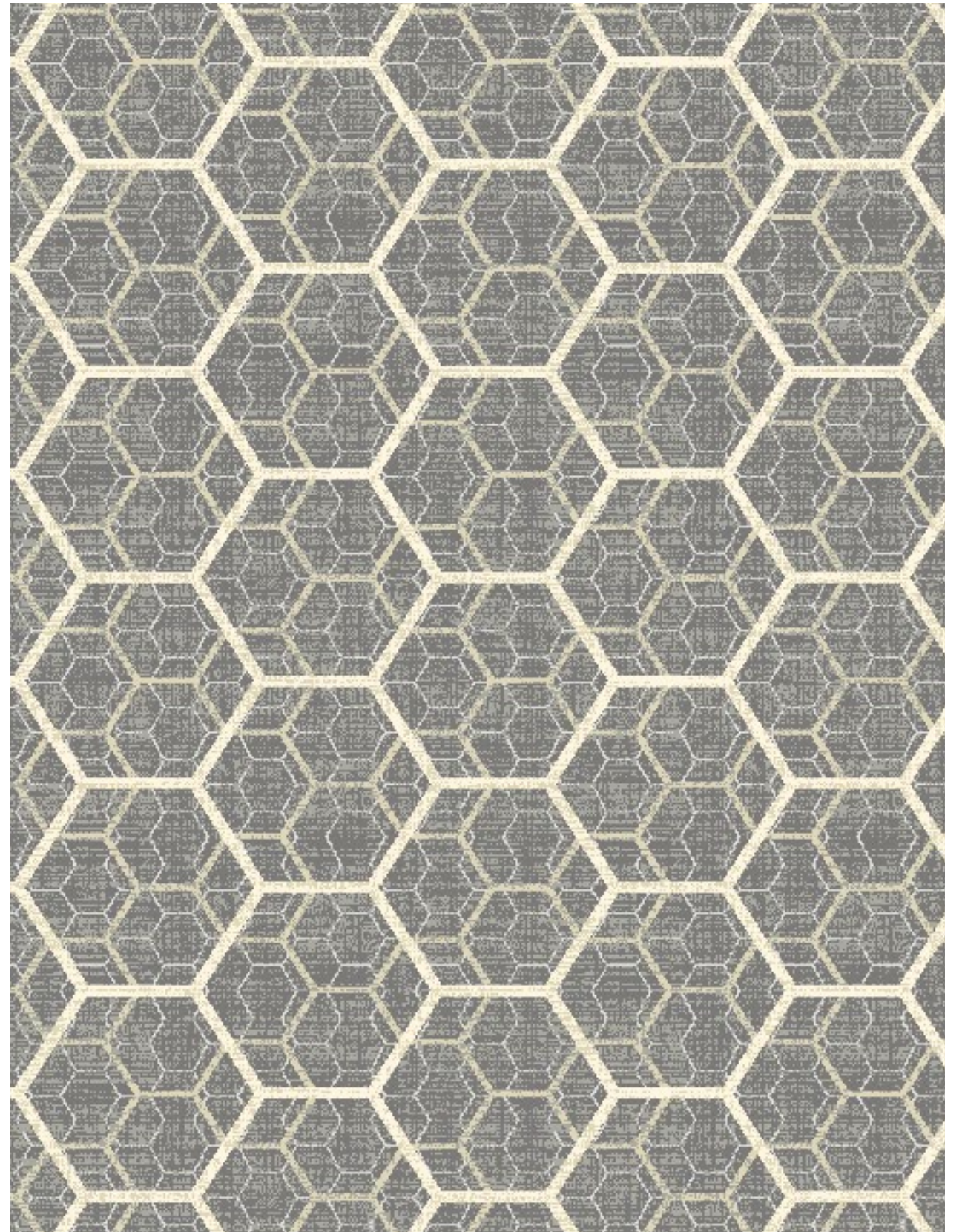




Design: 15/Q1376 Repeat: 52.6" x 69.8"

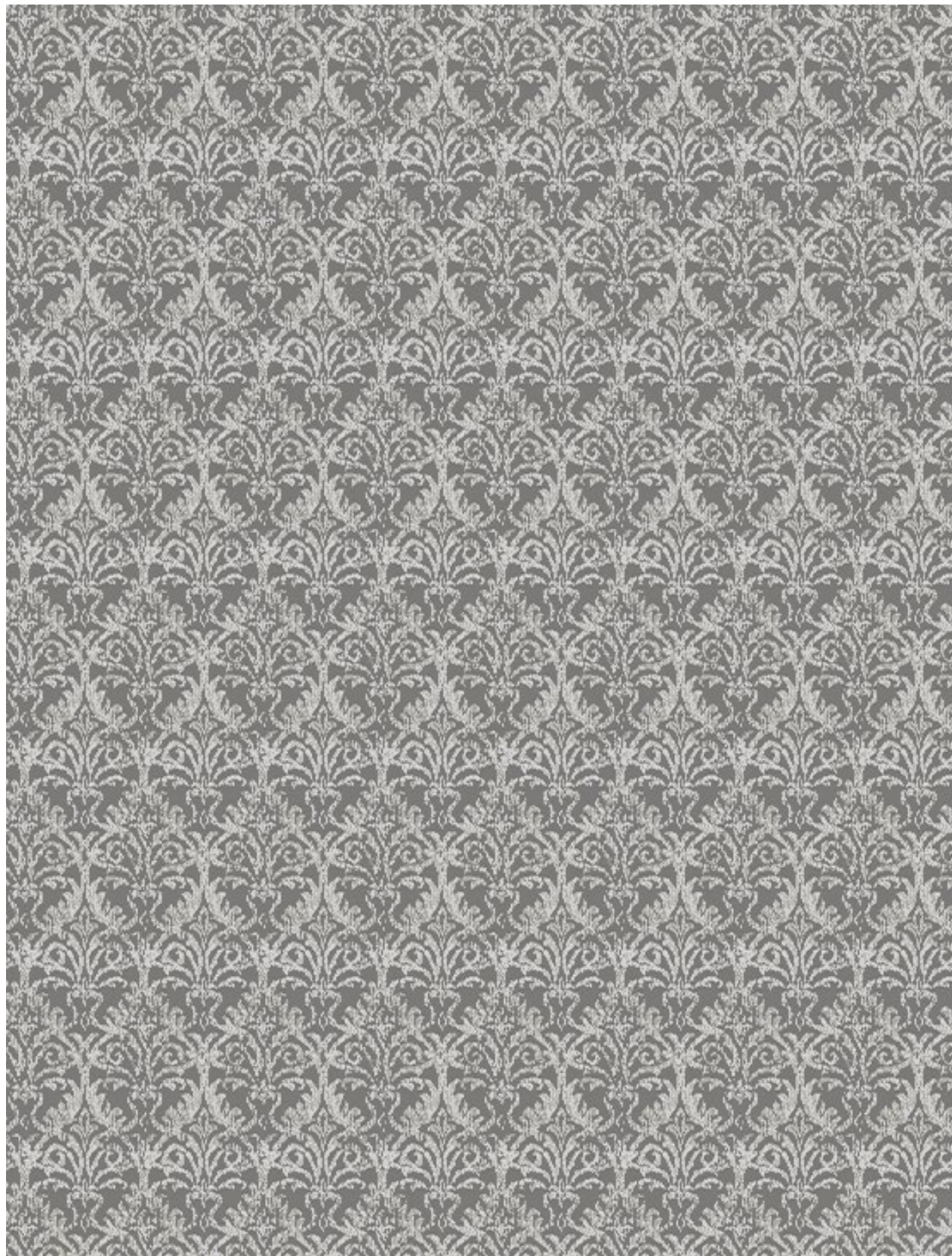


Design: 14/Q1470 Repeat: 39.4" x 66.7"



Design: 3/Q1394 Repeat: 78.9" x 46"





Design: I/Q1922 Repeat: 19.7" x 16.7"



M0027 M0026 M0025



Design: I/Q2000 Repeat: 39.4' x 24.1'



M0024 M0025 M0026



Design: 64/Q1106 Repeat: 78.9" x 98.4"



M0027 M0026 M0031



Design: I/Q1904 Repeat: 78.9" x 78.9"



M0026 M0027 M0025 M0024



Design: 77/Q1363 Repeat: 157" x 78.9"



M0024 M0026 M0025 M0027



Design: I/Q1908 Repeat: 78.9" x 87.8"





Design: I/Q1906 Repeat: 78.9" x 72"



M0024 M0025 M0026 M0030 M0027



Design: I3/Q1169 Repeat: 39.4" x 75.1"



M0031 M0024 M0028 M0029 M0027 M0026



Design: I/Q1903 Repeat: 39.4" x 22.8"



M0025 M0027 M0026



Design: I3/Q1251 Repeat: 39.4" x 28.4"



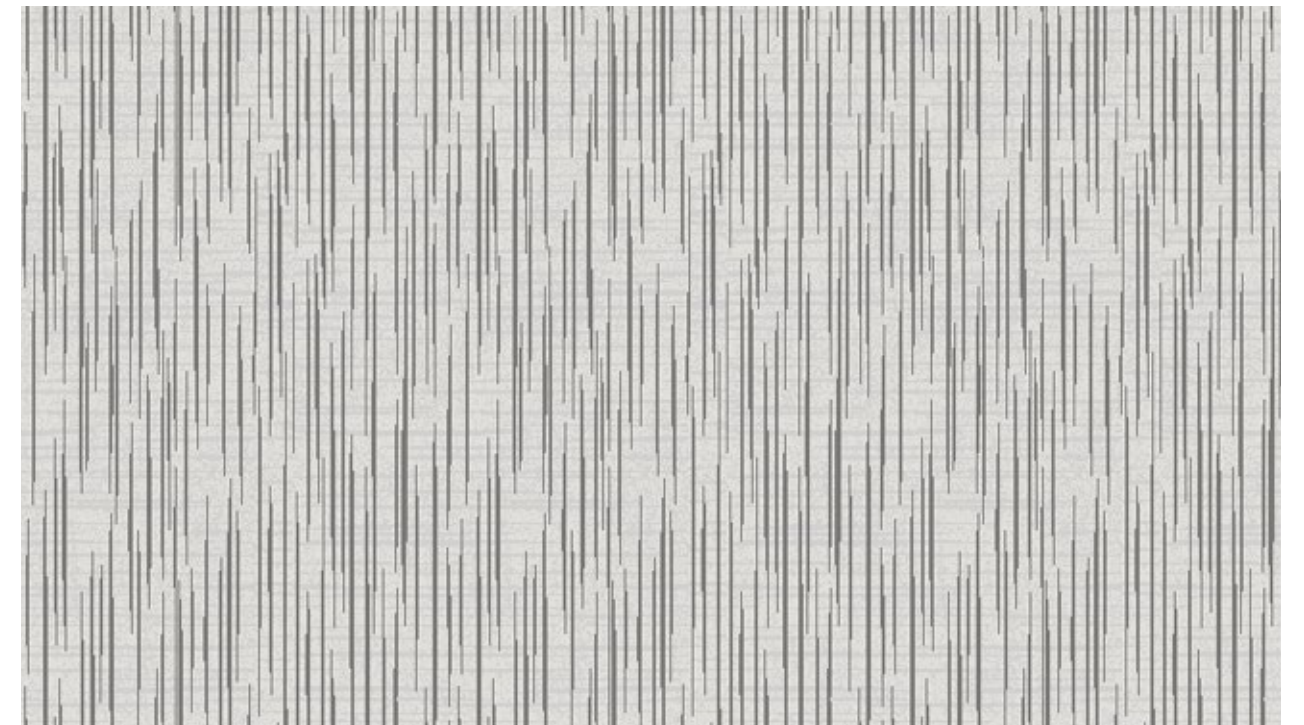
M0026 M0027 M0025 M0031



Design: I/Q1901 Repeat: 52.6" x 47.2"



M0026 M0025 M0027



Design: 17/Q1111 Repeat: 39.4" x 52.2"



Design: 20/Q1378 Repeat: 39.4" x 79.1"



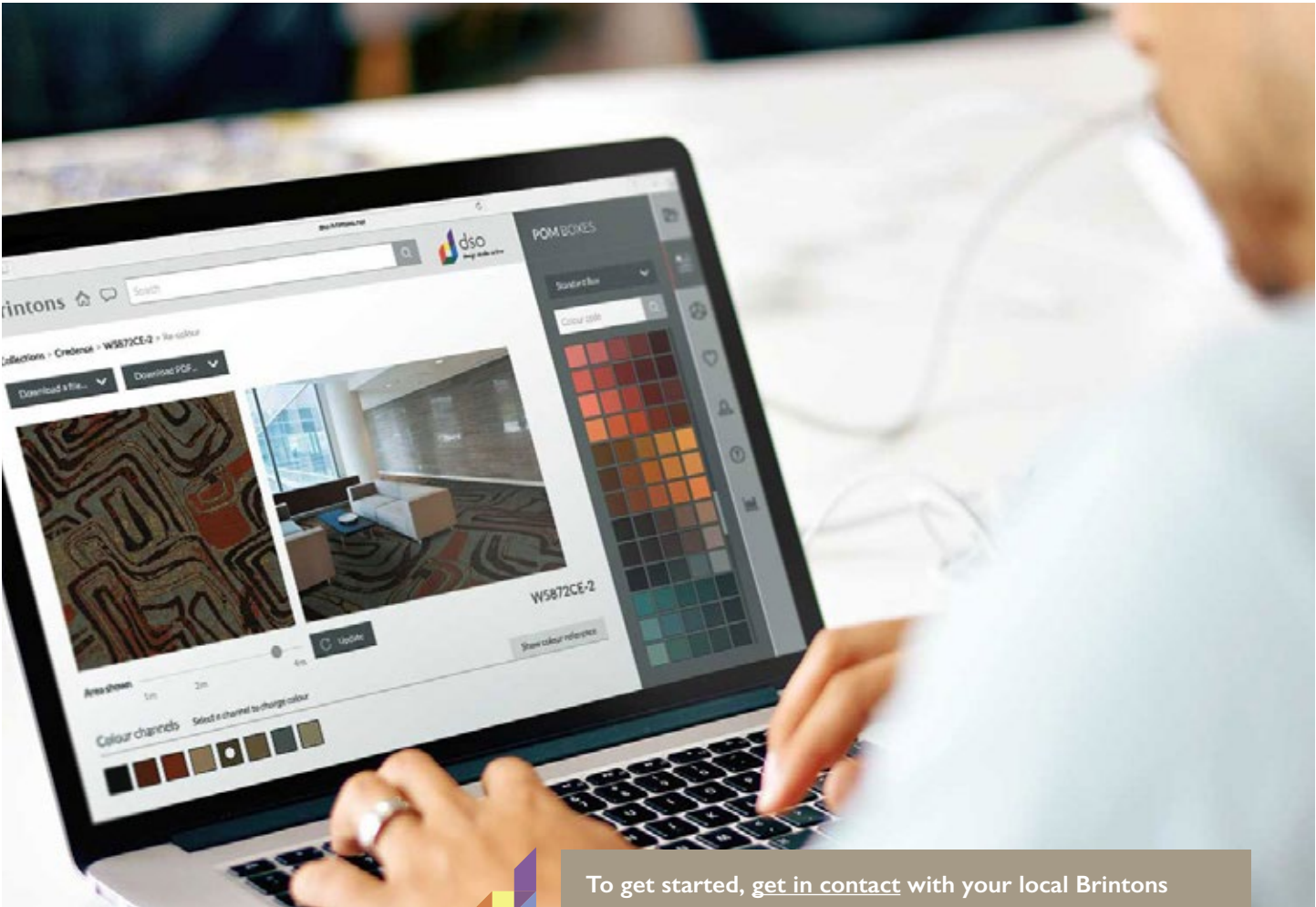
Working With Brintons

From pioneering the use of the industry standard 80/20 yarn blend to owning one of the largest design archives in the industry, Brintons continues to command recognition as a powerful creative source. The Brintons team strives to create exceptional products to meet the demand of any bespoke design brief and continues to surpass client expectations.

By choosing to work with Brintons, you will have access to a unique global network of design studios, field designers and project managers.

From start to finish your project will be championed by a dedicated project manager who will guide you through the entire process from planning and estimating to installation and aftercare.

Brintons is always available to provide you with the information and support you need to ensure your carpet retains its appearance and performs to specification.



To get started, [get in contact](#) with your local Brintons representative or dive into inspiration at dso.brintons.net.

Technical Specifications

	QW821A	QW921A	QWI021A	QWI121A
Construction	Woven Axminster (Broadloom)	Woven Axminster (Broadloom)	Woven Axminster (Broadloom)	Woven Axminster (Broadloom)
Surface Structure	Cut pile, single level	Cut pile, single level	Cut pile, single level	Cut pile, single level
Yarn Composition	100% undyed wool	100% undyed wool	100% undyed wool	100% undyed wool
Pitch	7 per inch	7 per inch	7 per inch	7 per inch
Rows	8 per inch	9 per inch	10 per inch	11 per inch
Tuft Density	56 per sq inch	63 per sq inch	70 per sq inch	77 per sq inch
Pile Height	0.28 inches	0.29 inches	0.29 inches	0.30 inches
Total Height	0.38 inches	0.39 inches	0.40 inches	0.40 inches
Pile Weight	33.77 oz/yd ²	37.99 oz/yd ²	42.21 oz/yd ²	46.42 oz/yd ²
Total Weight	54.53 oz/yd ²	60.40 oz/yd ²	62.44 oz/yd ²	67.92 oz/yd ²
Backing Materials	Polyester, Polypropylene, Latex	Polyester, Polypropylene, Latex	Polyester, Polypropylene, Latex	Polyester, Polypropylene, Latex
Suitability	Medium Contract	Extra Heavy Contract	Extra Heavy Contract	Extra Heavy Contract

Flammability Classification				
Europe CE Mark	EN 13501-I Class Cfl SI	EN 13501-I Class Cfl SI	EN 13501-I Class Cfl SI	EN 13501-I Class Cfl SI

Brintons

Americas

Brintons US Axminster Inc

Tel: +1 678 594 9300

Fax: +1 678 594 9301

Email: brintons@brintonsusa.com

EMEA

Brintons Carpets Ltd

Tel: +44 (0) 1562 635 665

Fax: +44 (0) 1562 634 737

Email: solutions@brintons.co.uk

APAC

Brintons Pty Ltd

Tel: +61 (0) 3 5226 3200

Fax: +61 (0) 3 5226 3242

Email: enquires@brintons.com.au

www.brintons.net

© Copyright Brintons Carpets Limited 2021. All copyright, design rights, and intellectual property rights existing in our designs are and will remain the property of Brintons Carpets Limited. Any infringement upon those rights will be pursued vigorously. Colors are reproduced within the limits of the printing process.

