



**Brintons**



the **self-expression** project

#TheBrintonsSEP

Group 2, Playlist





## The Self-Expression Project

### Group 2, Playlist

**Continuing the experiment:** Are we limited to pulling content from visual mood boards or is there more to inspiration? Inspiration is everywhere, right? It is our job to harness it, to manufacture great design and weave compelling carpet. We are a community of creatives, with a multitude of ways to express ourselves, living in a world full of catalysts. So no, we aren't limited to just images. Listen to this playlist. Churn out some carpet. Let the sound be your theme. Let your emotion choose your color. Let the rhythm dictate your line work. Express yourself.

[Listen here.](#)





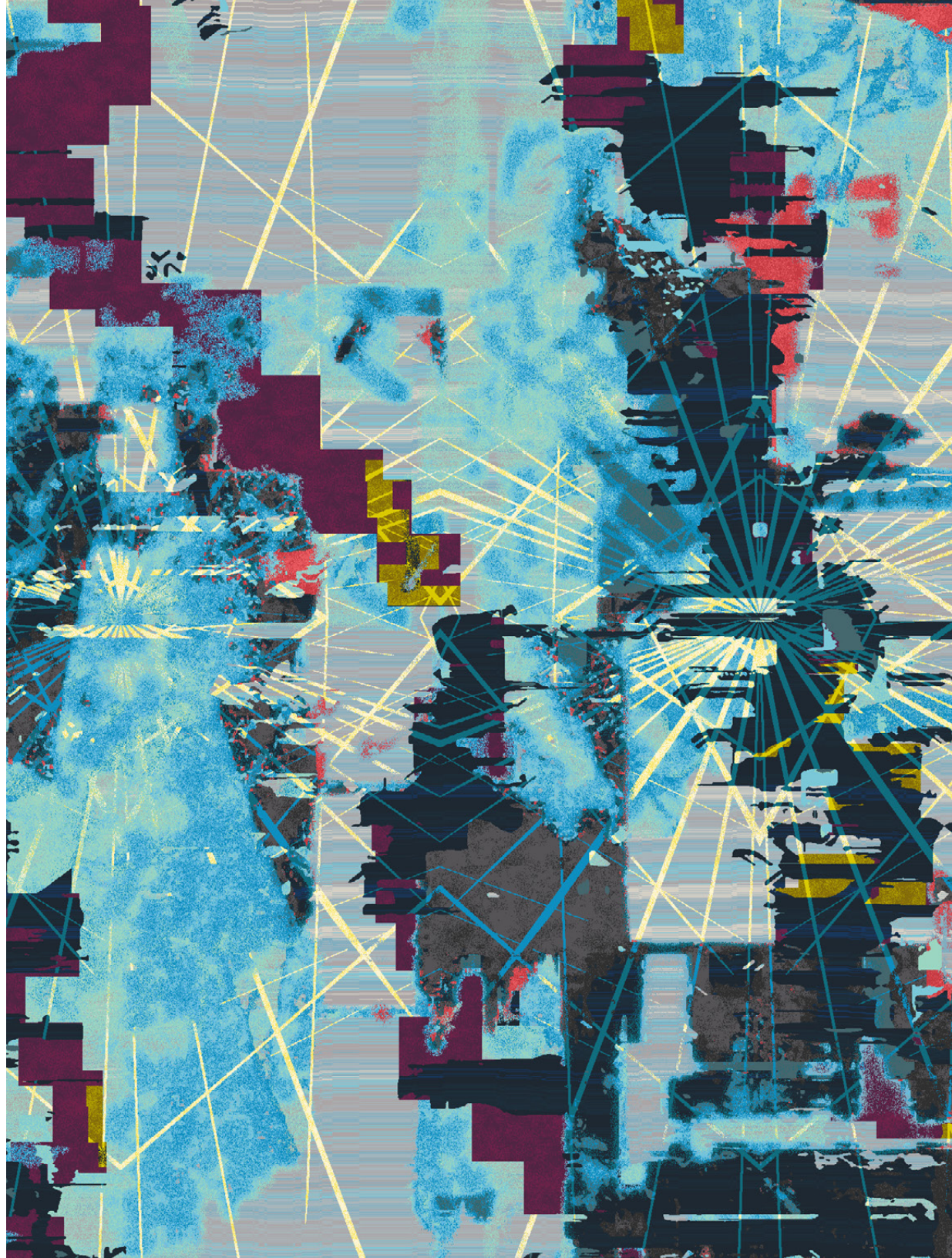
**Katie Nehrbaauer, Senior Designer, Brintons Americas:**

"I was immediately drawn to the Pixies track "Wave of Mutilation" for its manic energy. I began to think of the song in terms of layers of sounds that build upon each other. As I approached the design, I thought about how I could use multiple layers that would mimic the different instruments and capture the energy of the track."

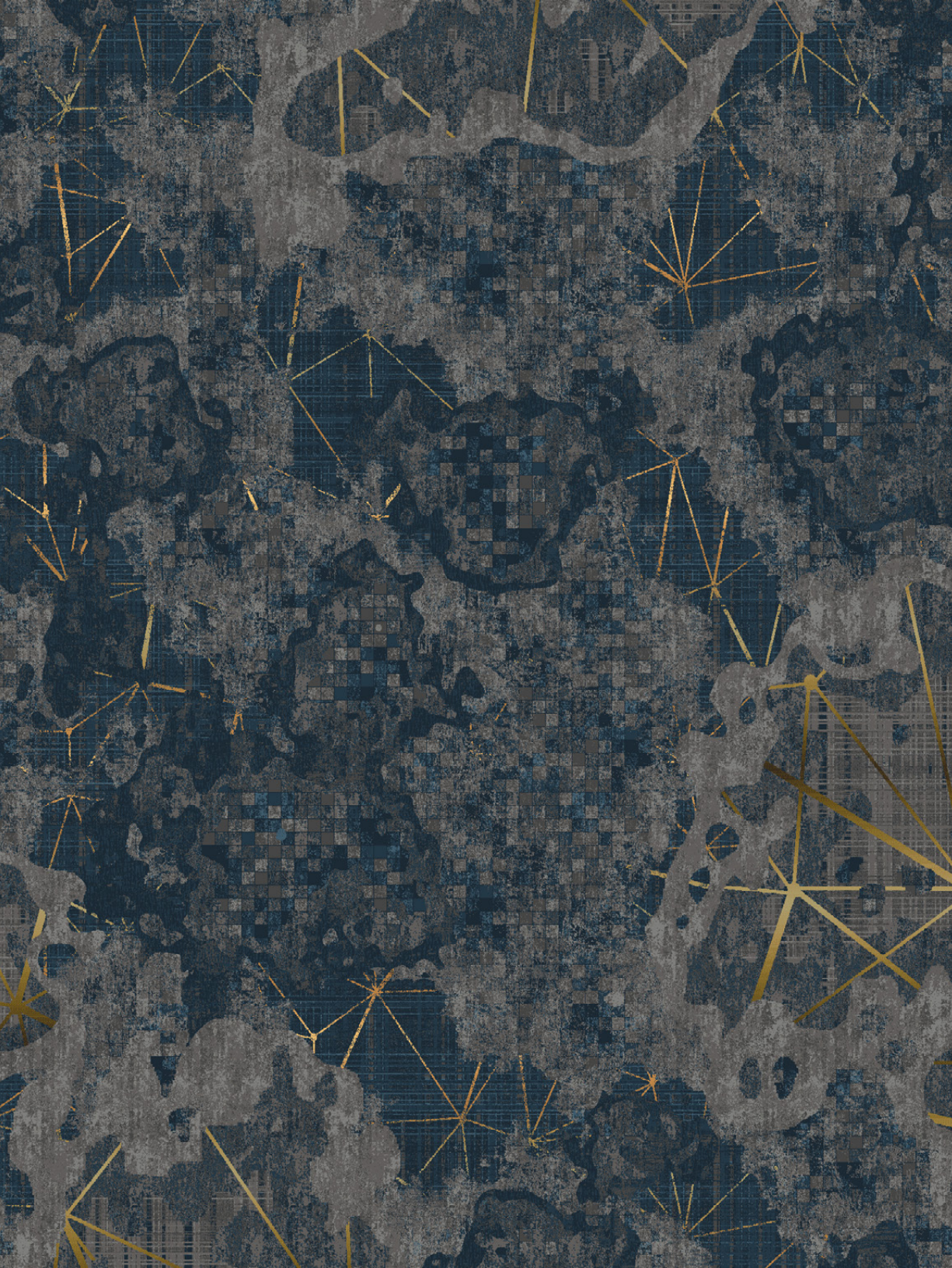
1	2	3	4	5	6	7	8	9
20-1900	20-3183	23-3763	23-4226	20-2603	17-0040	23-4231	23-2844	23-4230
10	11	12	13	14	15	16	17	18
23-3363	20-4056	23-4224	24-4217	24-3764	24-3754	24-3744	25-4240	25-4239
19	20	21	22	23	24			
25-3145	16-0059	23-3613	23-3663	23-3033	20-L8712			

Design: Q01/A17441ZSE

©Brintons Carpets Limited  
www.brintons.net







**Mandy Middlehurst, Senior Designer, Brintons Americas:**

"Music is as personal to the listener as art is to the viewer; some are drawn to how the music is composed while others are pulled in by the lyrics. I took the general theme of the playlist [time] and focused on one line from a song. Inspired by 'the moments that make up a dull day' from the track "Time" off Pink Floyd's *The Dark Side of the Moon*, I wanted to take this line of music and turn it into art on the floor. I blended several textural layers with geometric elements and vibrant color, creating an illusion of a moment in time flowing through a large empty space."

1	2	3	4	5	6	7	8	9
24-3554	24-3664	24-4160	24-MB025	24-3634	40-T7163	40-T7161	20-4175	23-3663
10	11	12	13	14				
23-2830	23-V83	26-V36	26-4162	13-0293				

Design: Q02/A15778ZSE

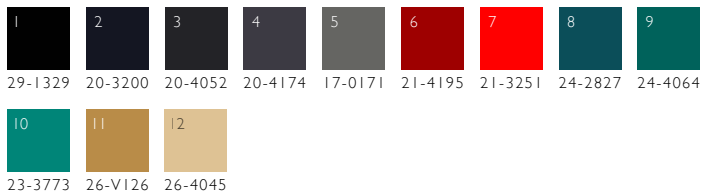
©Brintons Carpets Limited  
[www.brintons.net](http://www.brintons.net)





**Elaine Traynor, Senior Design Consultant Marine,  
Brintons Americas:**

“Often as axminster designers, we are presented with a visual to work from. Being challenged with a playlist, as opposed to an image and a predetermined color palette, allowed us to work in a very abstract way using our emotional response to the sound to guide us. I started with a simple theme, the lines on a music score, then explored how these lines could be distorted to mimic a melted movement. I think sometimes we visualize color in music and that language spoke to me. Wanting to capitalize on the drama while keeping a clean aesthetic, I used shades of moody blacks and grays to create a strong contrast with a cool teal background. I finished the design with unexpected pops of saturated tomato red.”



Design: Q03/A026981SE

©Brintons Carpets Limited  
[www.brintons.net](http://www.brintons.net)







listen to the Self-Expression Project playlist [here](#)



discover more on DSO  
[dso.brintons.net](http://dso.brintons.net)